



FOREST FMS DUAL Assembly instructions

Scan for the instructionvideo

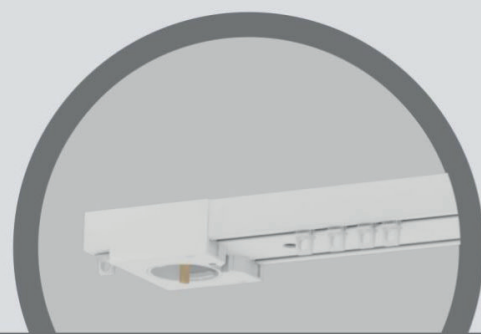


THE WORLD
BEHIND
YOUR
CURTAINS

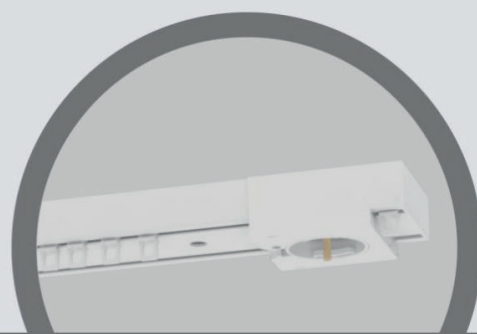
BEFORE STARTING THE ASSEMBLY PROCES, READ CAREFULLY THESE INSTRUCTIONS

MOTOR SIDE AND POSITIONING OF THE CARRIERS IN THE RIGHT CHANNEL

THE CURTAIN ON THE ROOM SIDE, THE FRONT IF YOU LOOK OUT FROM THE ROOM, SHOULD ALWAYS BE IN THE CHANNEL IN FRONT OF THE MOTOR.



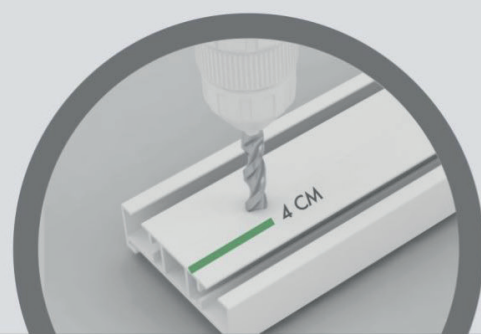
WHEN THE MOTOR IS ON
THE **LEFT** SIDE OF THE TRACK
PLACE THE LEFT CURTAIN IN THE FRONT CHANNEL OF THE TRACK



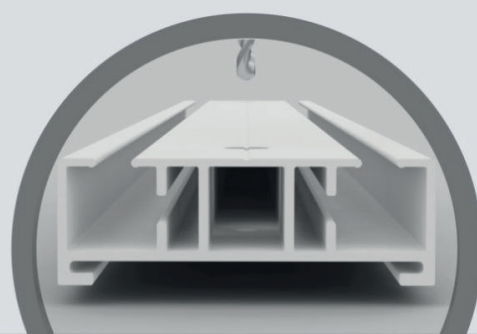
WHEN THE MOTOR IS ON
THE **RIGHT** SIDE OF THE TRACK
PLACE THE RIGHT CURTAIN IN THE FRONT CHANNEL OF THE TRACK

MOUNTING HOLES AT BOTH ENDS OF THE TRACK

AFTER CUTTING THE TRACK, THERE MUST BE A HOLE OF ROUND 5 AND 10 AT BOTH ENDS WITHIN 10 CM FROM THE END.



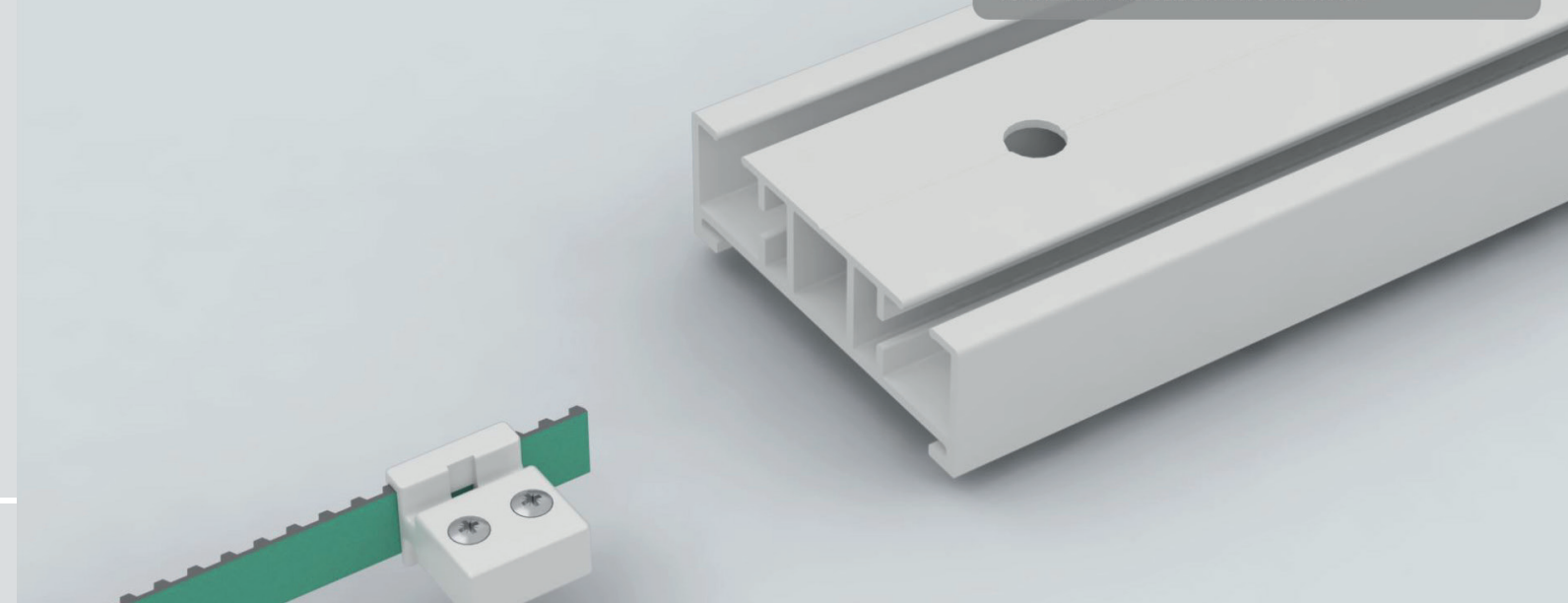
IF THERE IS NO HOLE WITHIN 10 CM
FROM BOTH ENDS
IT MUST BE DRILLED 4 CM FROM THE END AT BOTH ENDS



THIS CAN BE DONE WITH A STEPPED DRILL
FROM AROUND 5 TO AROUND 10
THEN YOU CAN DRILL IN ONE GO

ASSEMBLY STEP 1 - CONNECT THE FOLLOWER PART

TO THE BELT AND SLIDE IT INTO THE TRACK



ASSEMBLY STEP 2 - PLACE THE END STOP


TO GUIDE THE BELT THROUGH THE TRACK



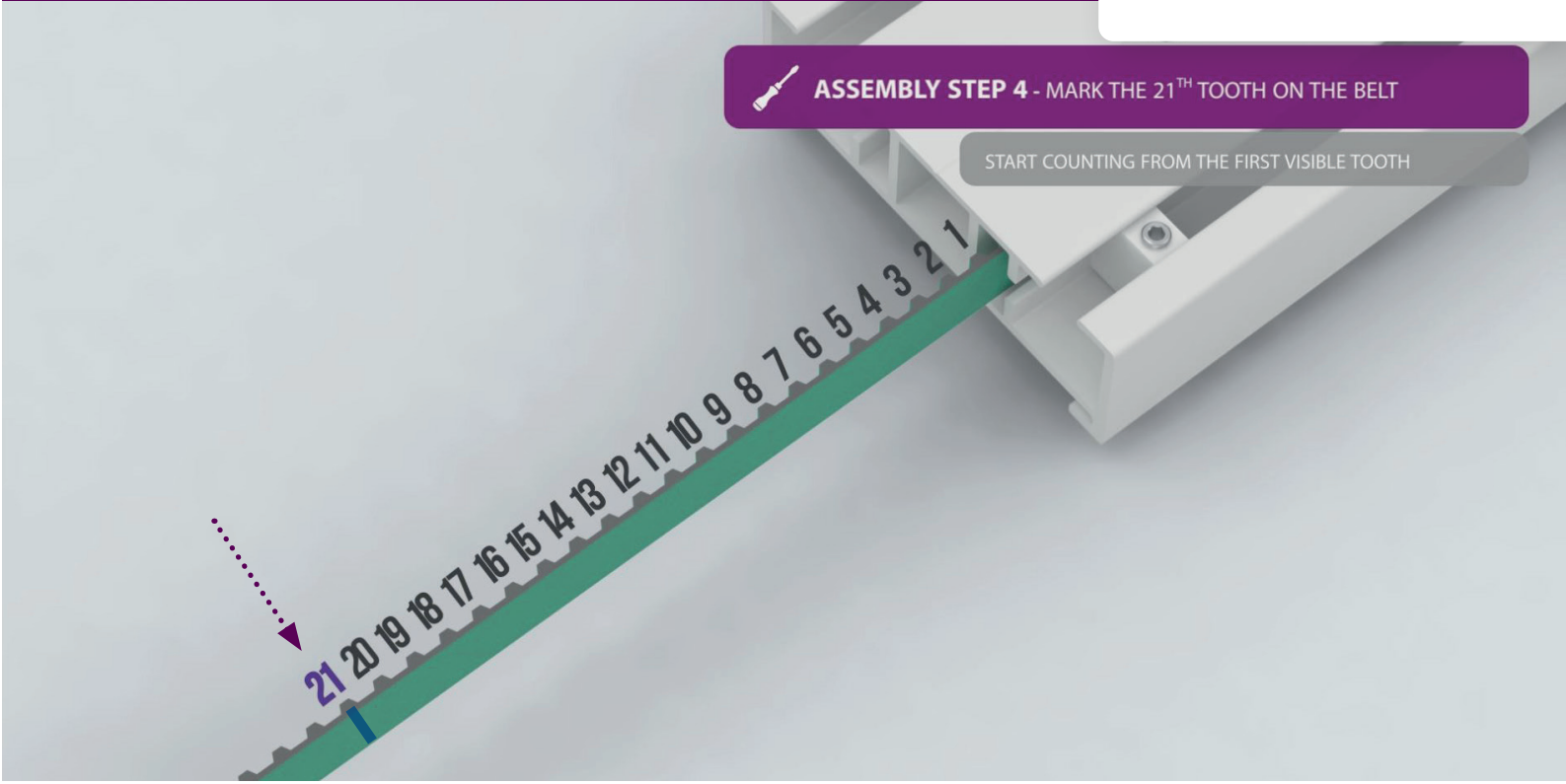
ASSEMBLY STEP 3 - SLIDE THE FOLLOWER PART THROUGH THE TRACK

AND STOP WHEN THE BELT IS ALIGNED WITH THE END OF THE TRACK



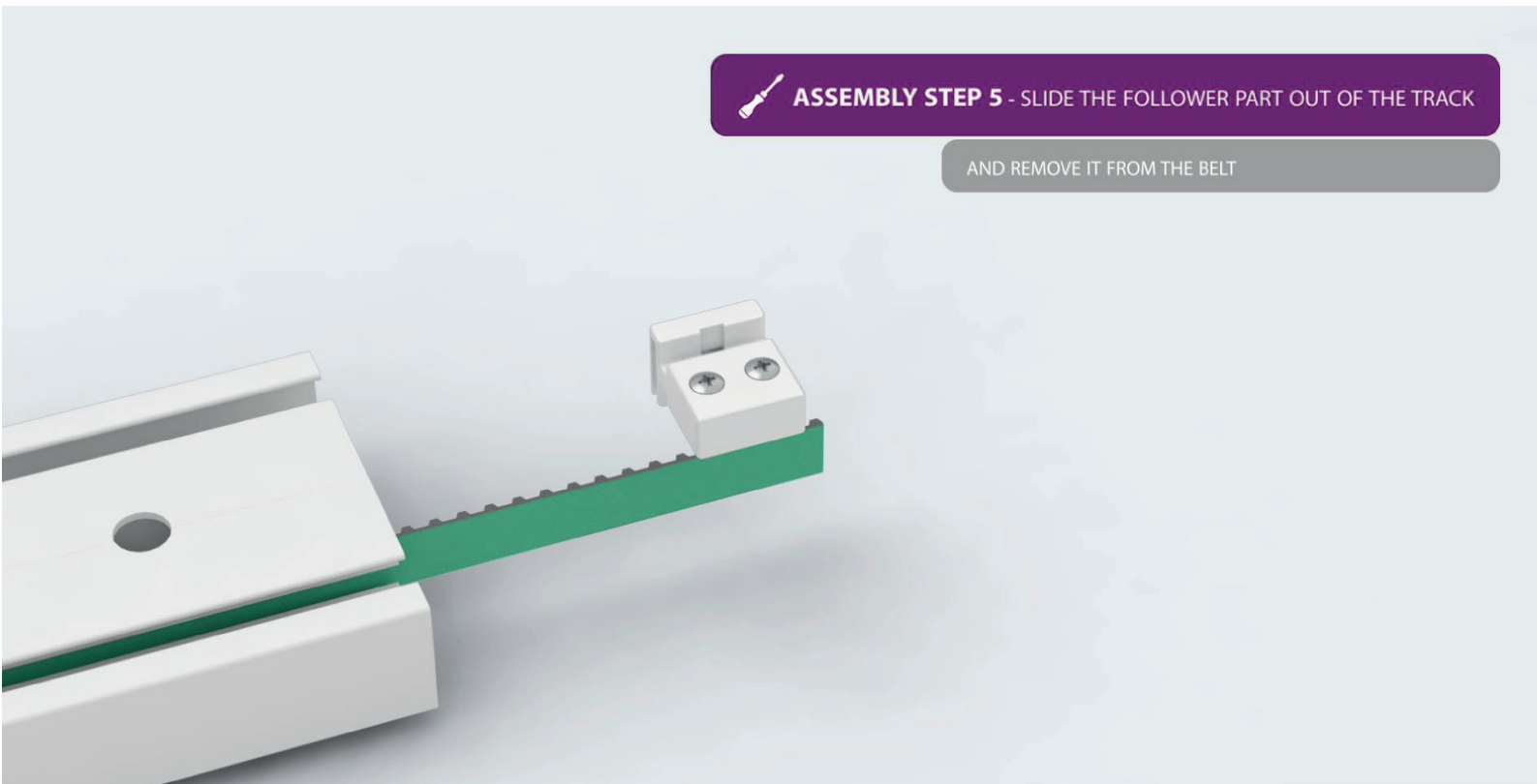
 **ASSEMBLY STEP 4** - MARK THE 21TH TOOTH ON THE BELT

START COUNTING FROM THE FIRST VISIBLE TOOTH



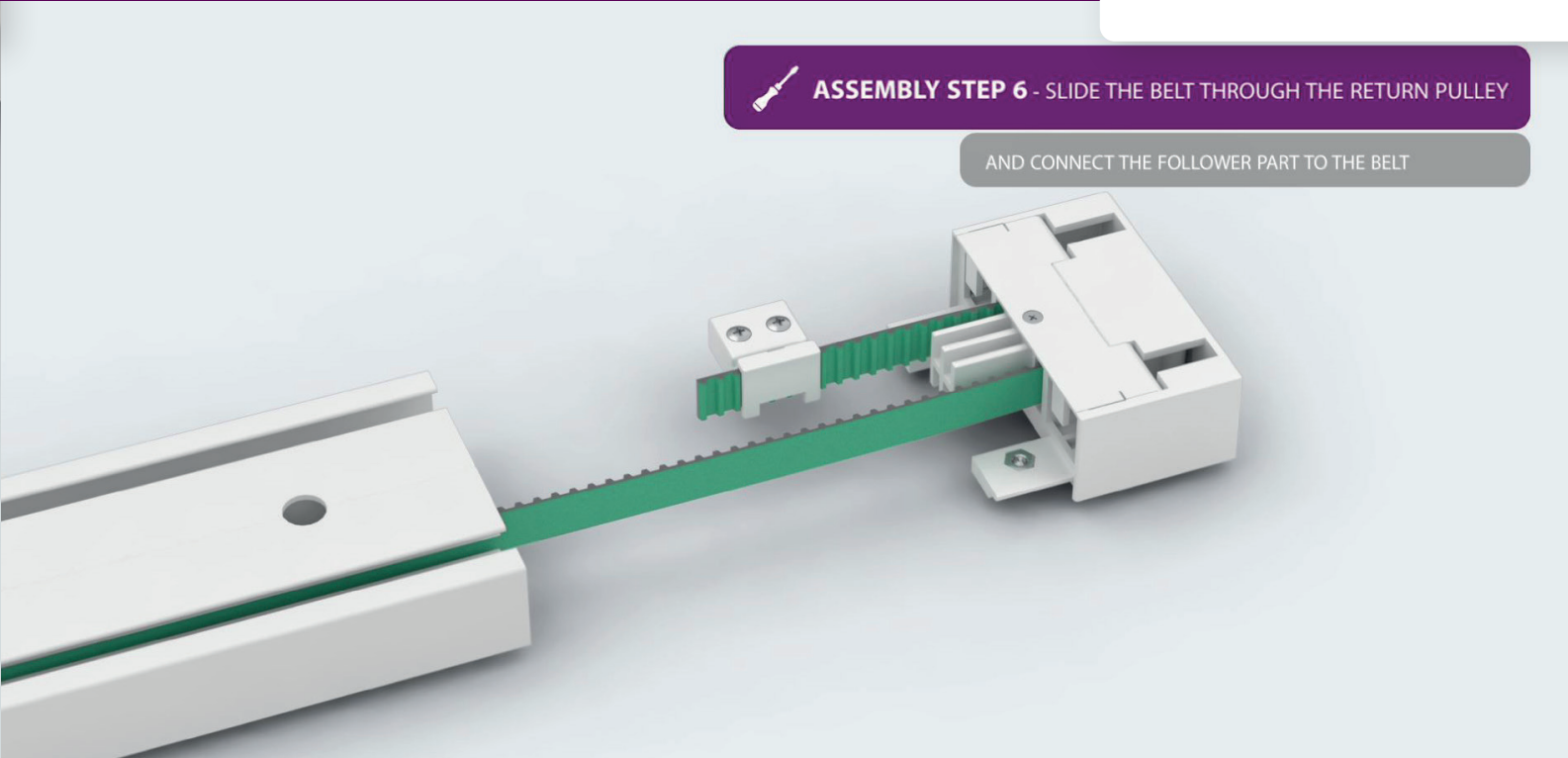
 **ASSEMBLY STEP 5** - SLIDE THE FOLLOWER PART OUT OF THE TRACK

AND REMOVE IT FROM THE BELT



 **ASSEMBLY STEP 6** - SLIDE THE BELT THROUGH THE RETURN PULLEY

AND CONNECT THE FOLLOWER PART TO THE BELT



 **ASSEMBLY STEP 7** - SLIDE THE FOLLOWER PART

AND RETURN PULLEY INTO THE TRACK (IT HAS A TIGHT FIT)



 **ASSEMBLY STEP 8** - SLIDE THE FOLLOWER PART THROUGH THE TRACK

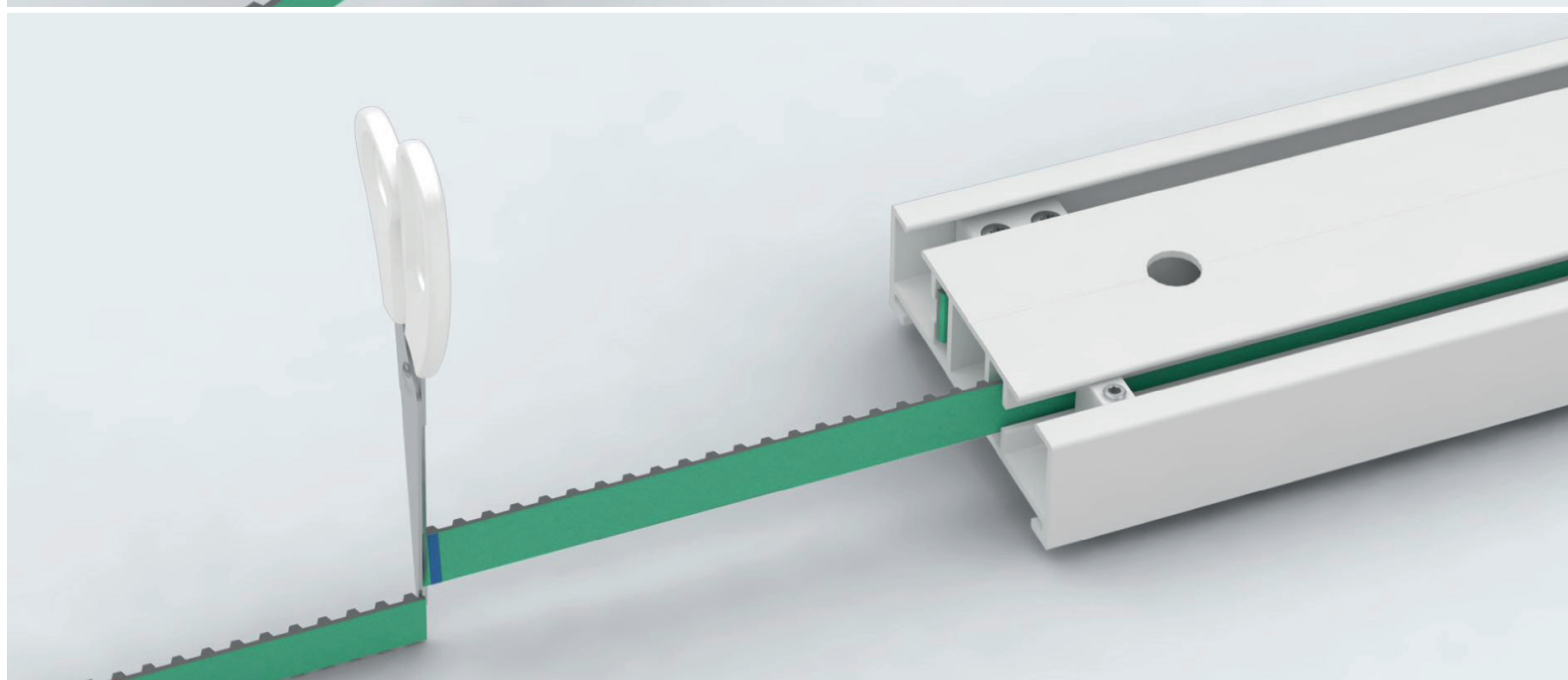
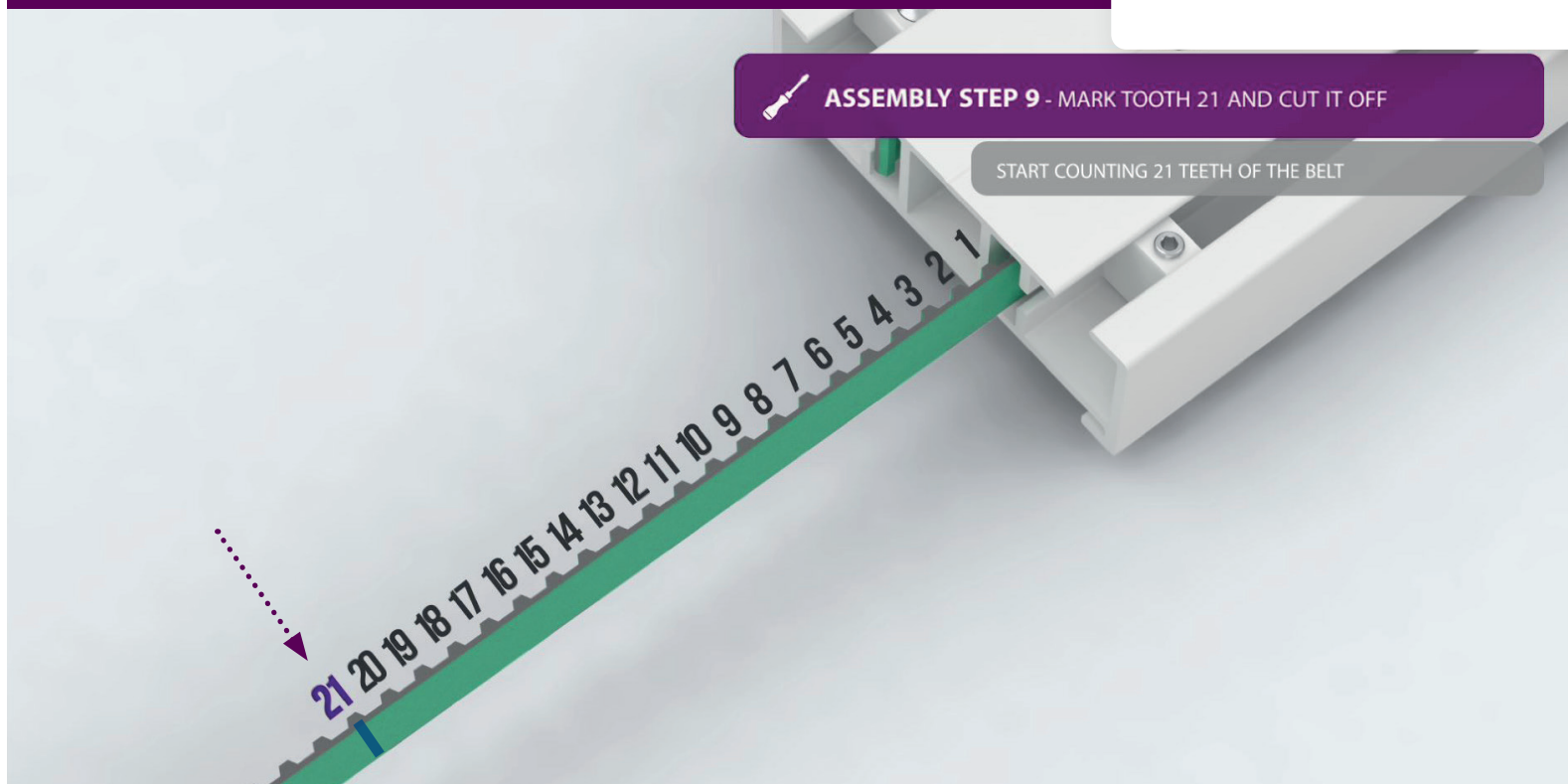
AND STOP WHEN THE BELT IS ALIGNED TO THE END OF THE TRACK

STOP HERE

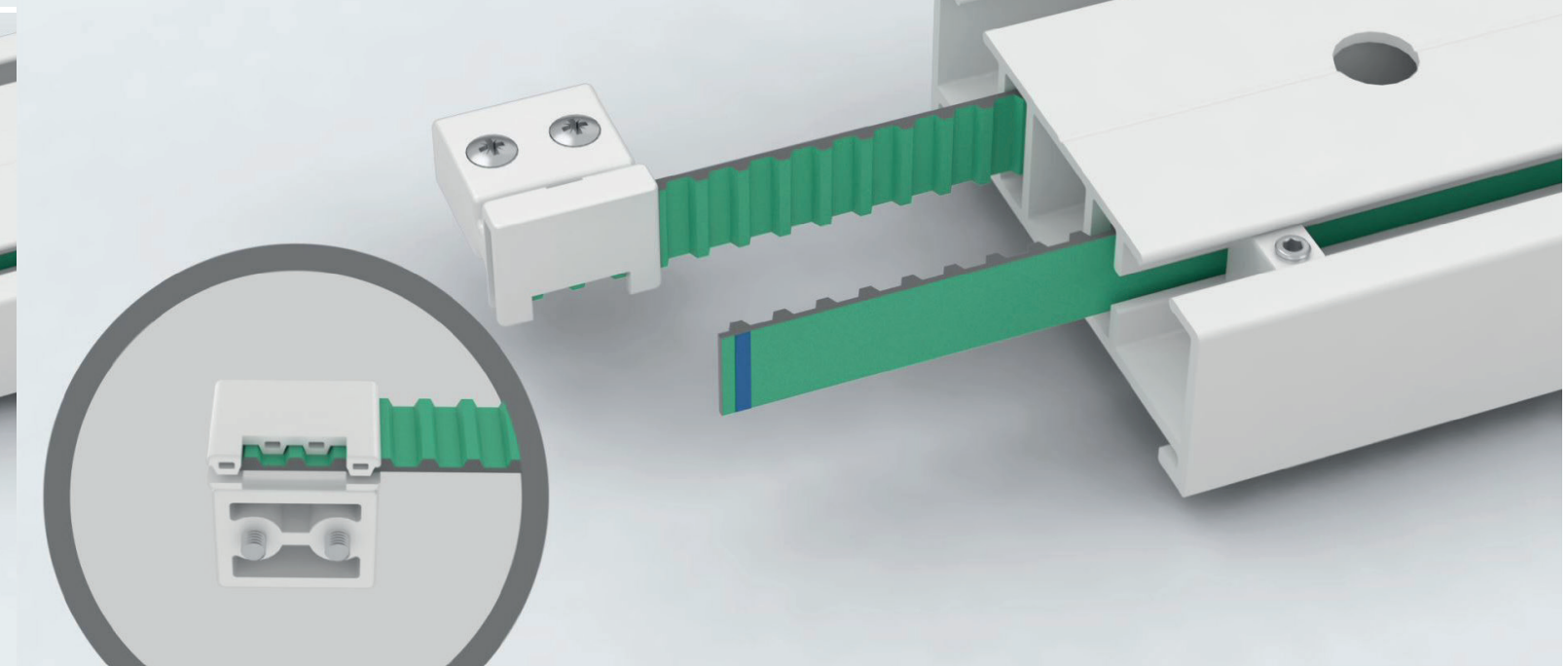
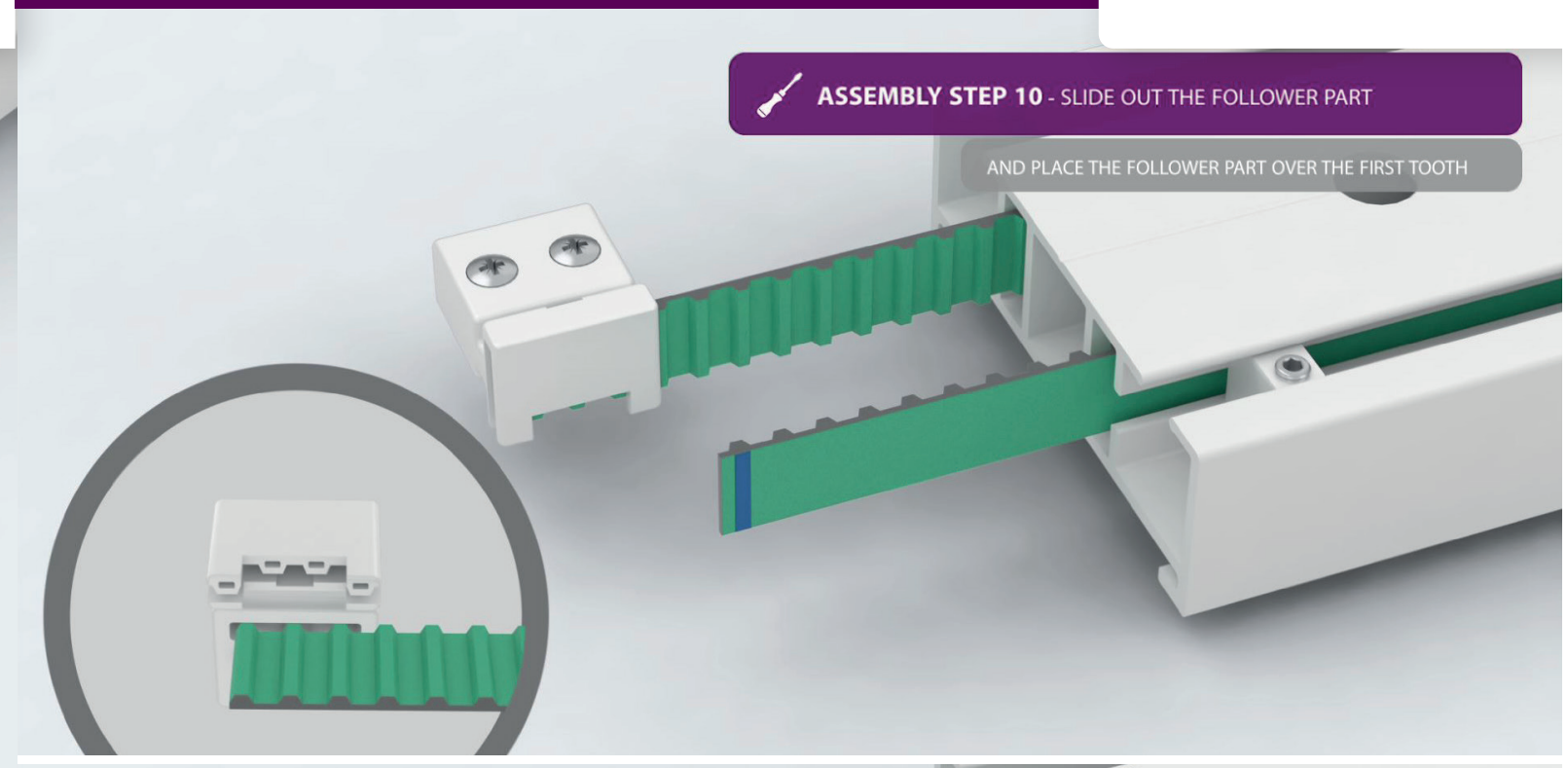


**ASSEMBLY STEP 9 - MARK TOOTH 21 AND CUT IT OFF**

START COUNTING 21 TEETH OF THE BELT

**ASSEMBLY STEP 10 - SLIDE OUT THE FOLLOWER PART**

AND PLACE THE FOLLOWER PART OVER THE FIRST TOOTH

**ASSEMBLY STEP 11 - ATTACH THE LOCK**

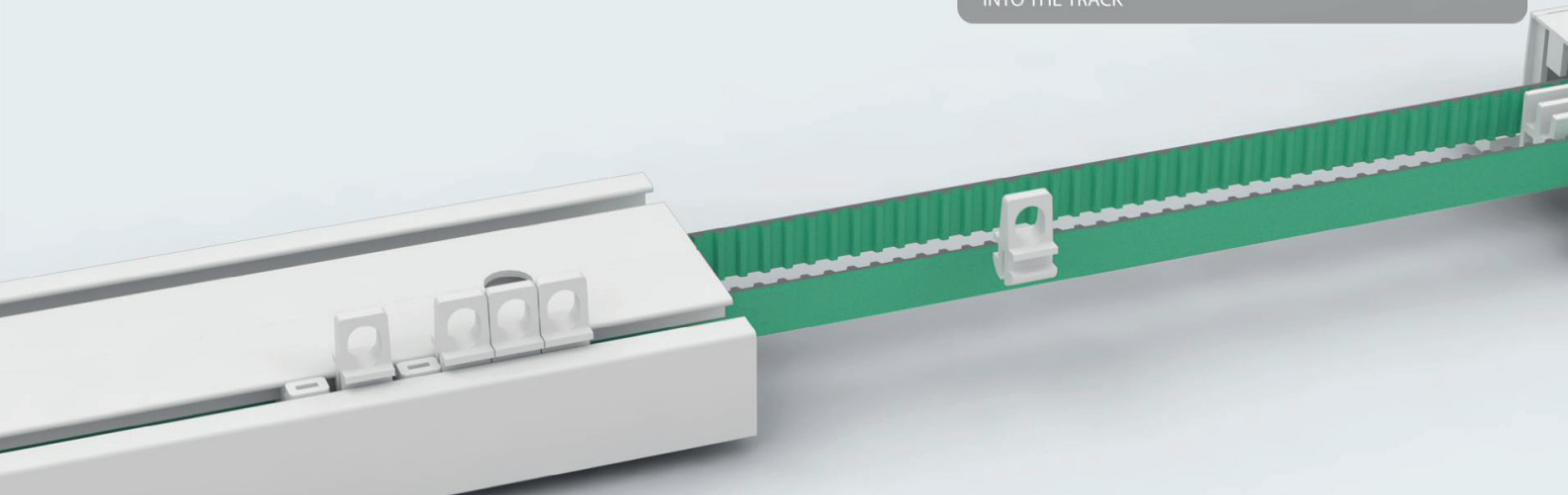
TO SECURE THE FOLLOWER PART





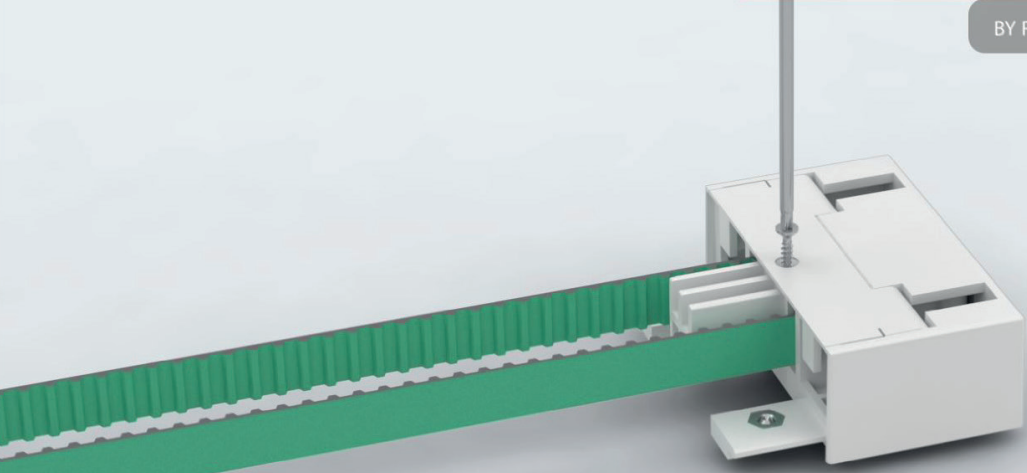
ASSEMBLY STEP 16 - SLIDE THE REST OF THE CARRIERS

INTO THE TRACK



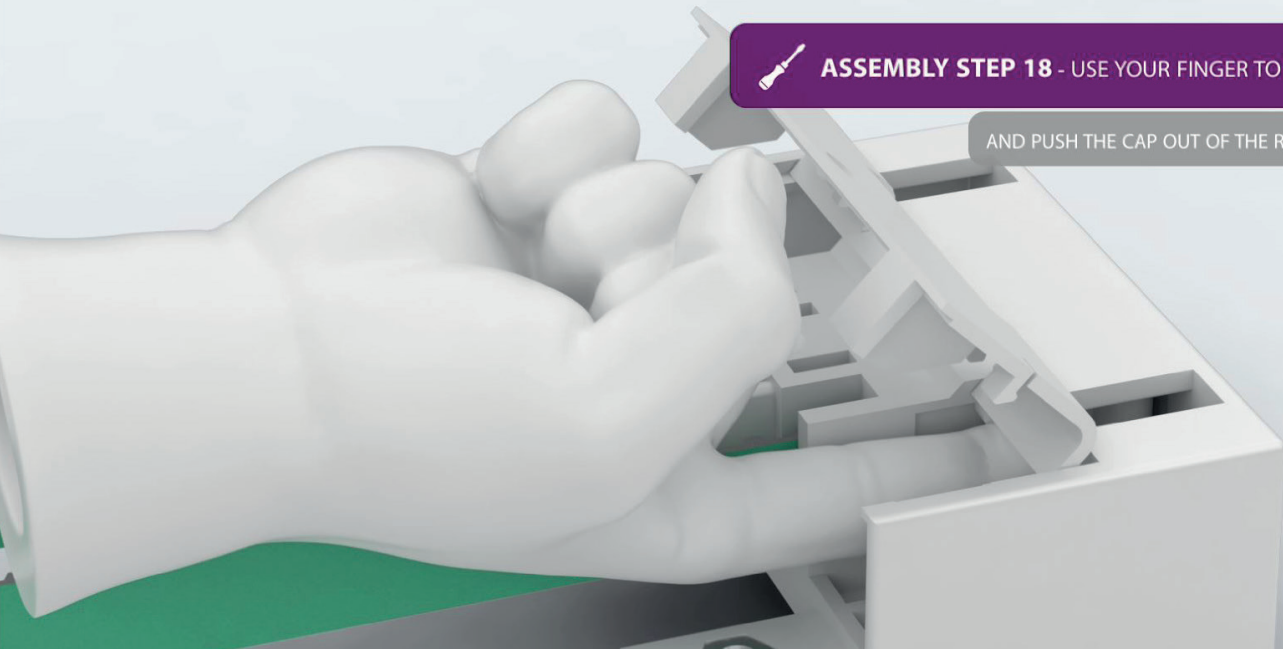
ASSEMBLY STEP 17 - OPEN UP THE RETURN PULLEY

BY REMOVING THE SCREW



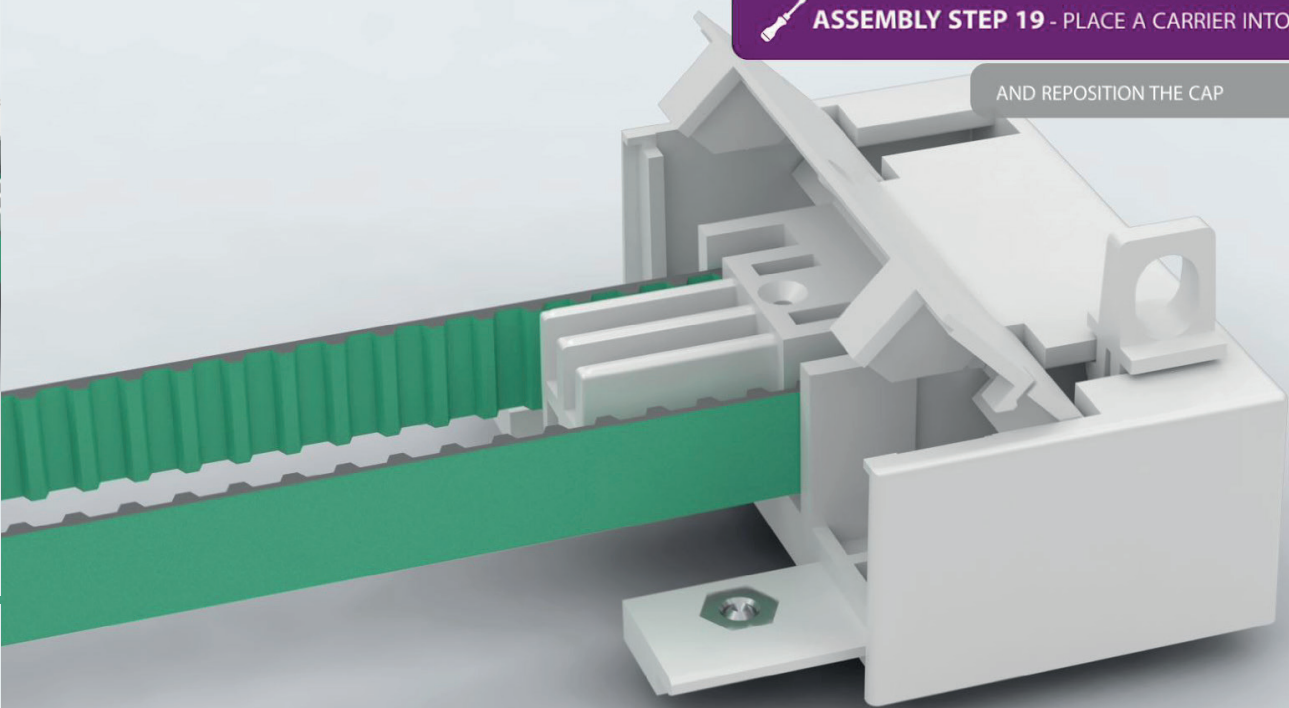
ASSEMBLY STEP 18 - USE YOUR FINGER TO LIFT THE CAP

AND PUSH THE CAP OUT OF THE RETURN PULLEY



ASSEMBLY STEP 19 - PLACE A CARRIER INTO THE RETURN PULLEY

AND REPOSITION THE CAP



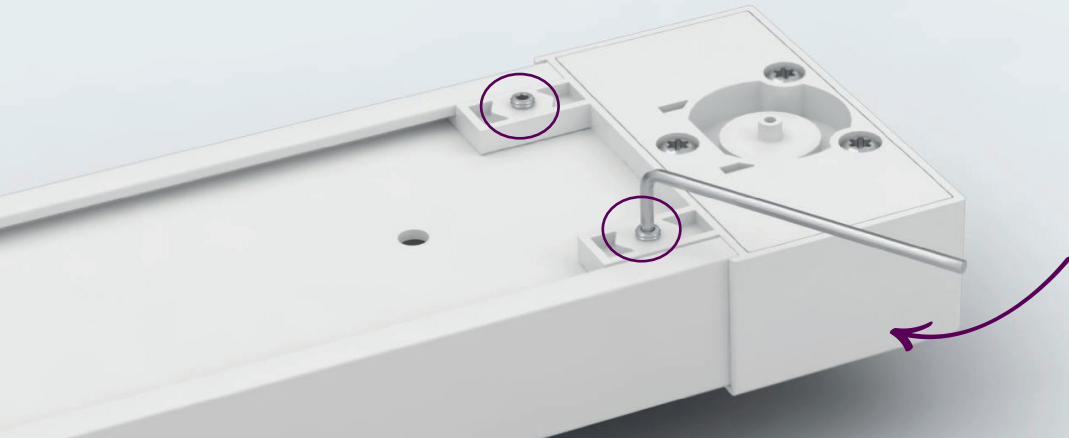
ASSEMBLY STEP 20 - ATTACH THE RETURN PULLEY

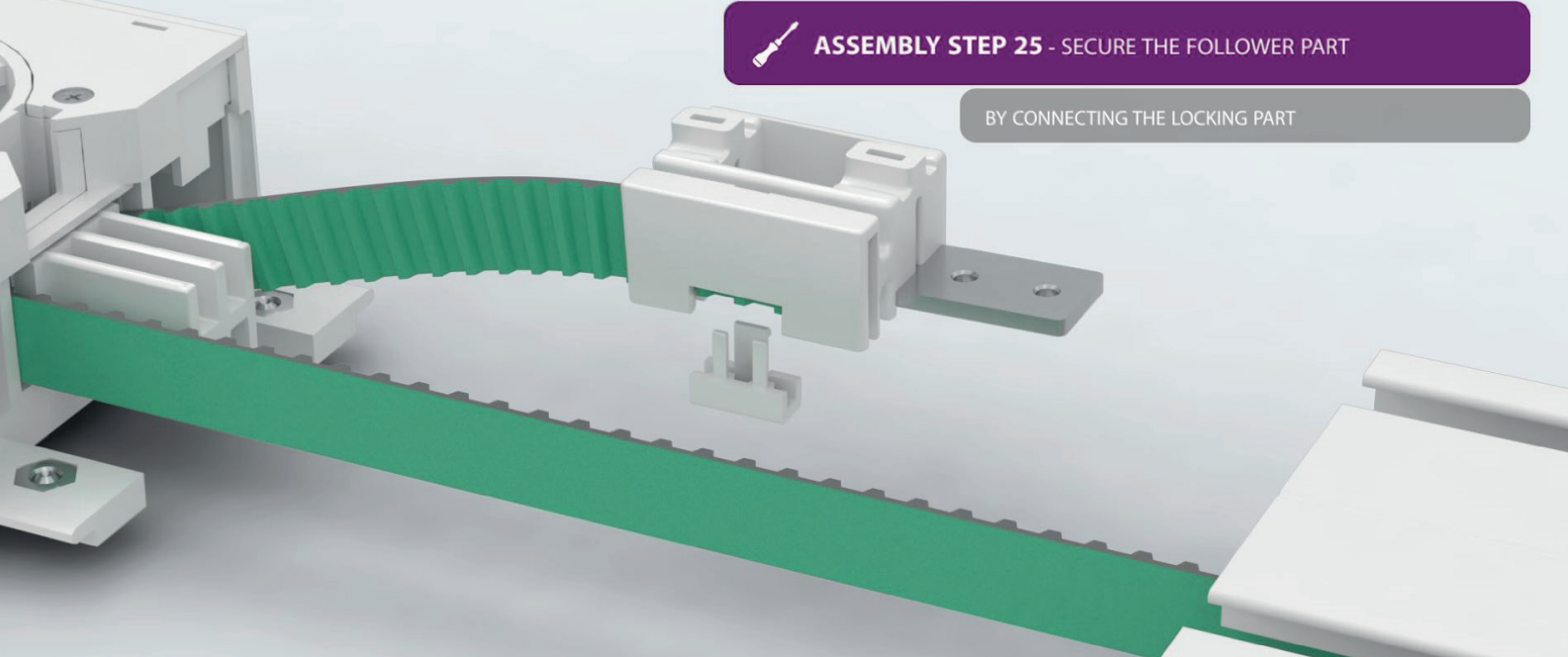
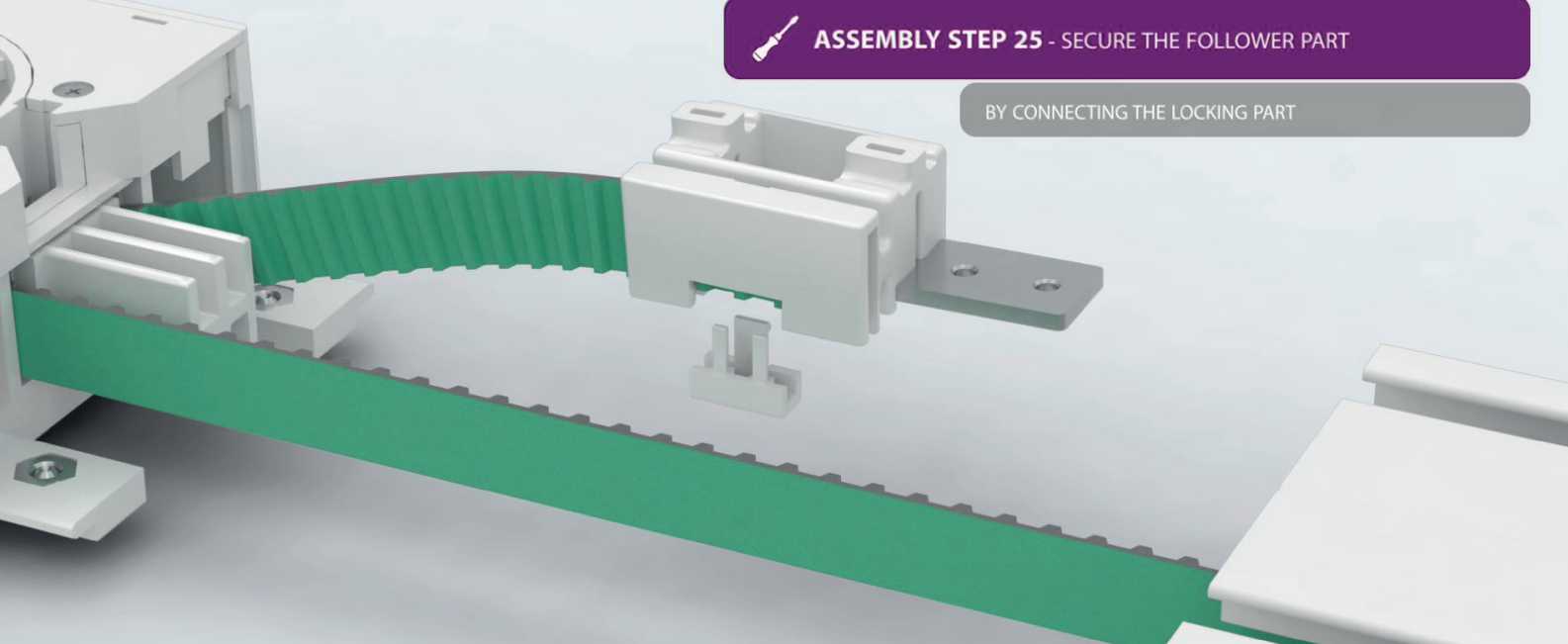
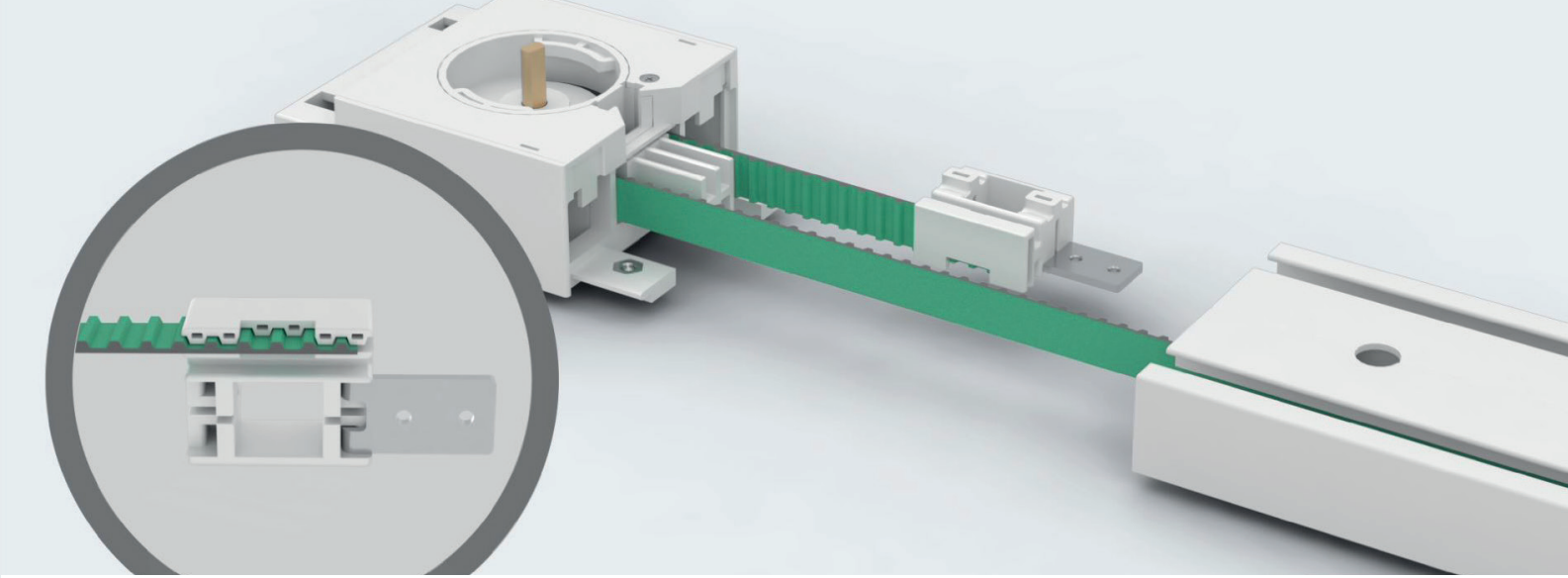
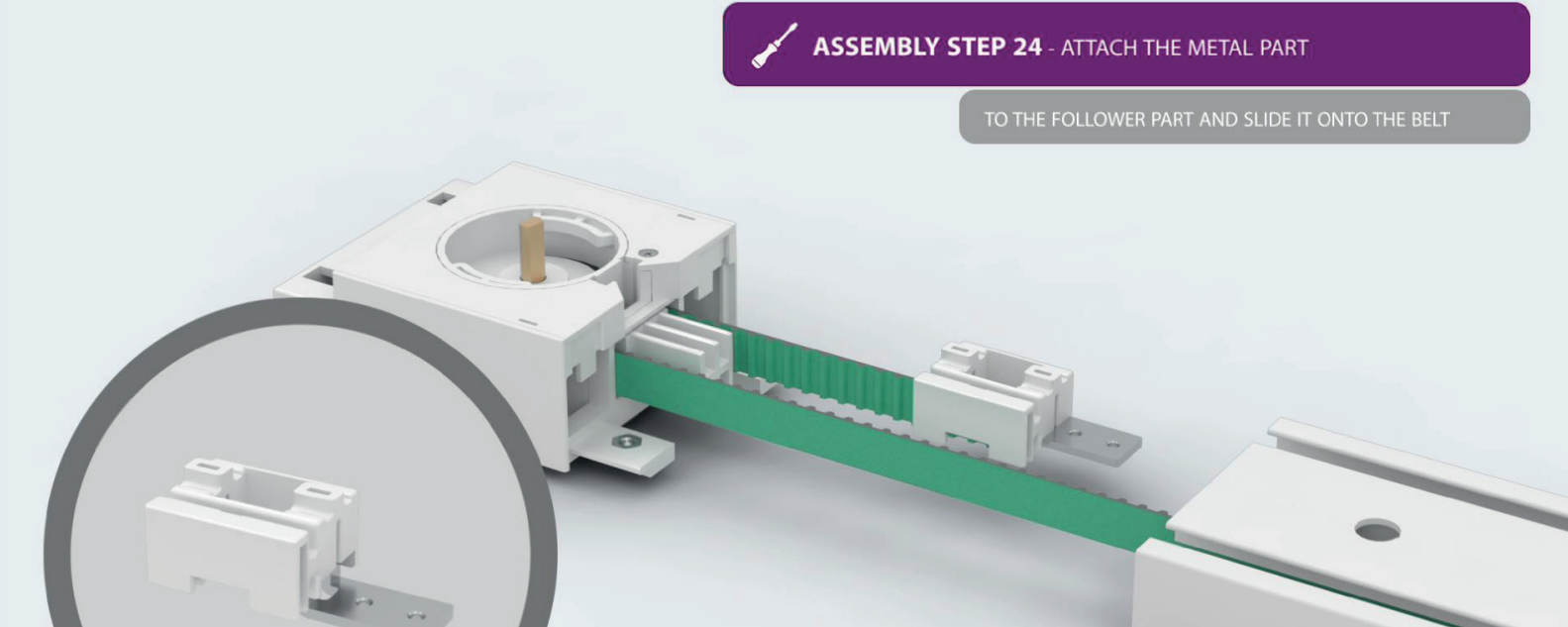
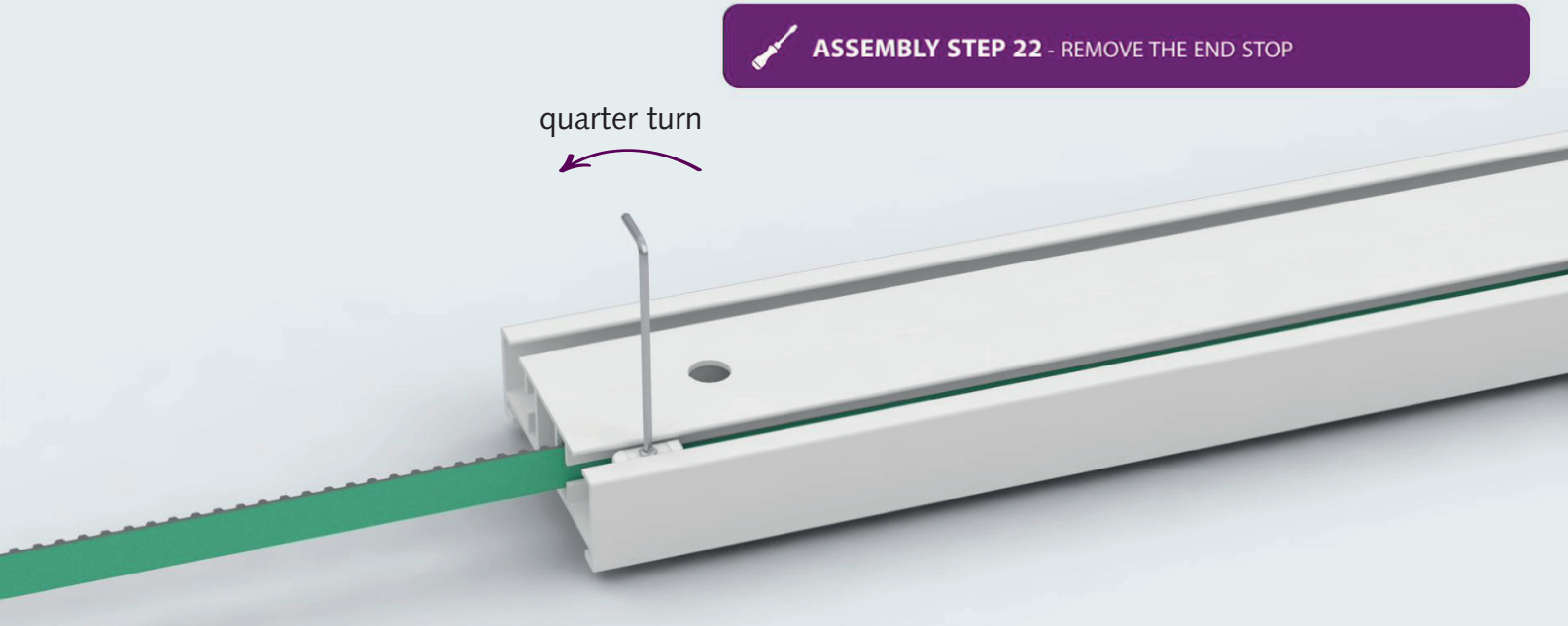
TO THE TRACK AND FASTEN THE SCREW



ASSEMBLY STEP 21 - FASTEN THE SCREWS ON THE BACK

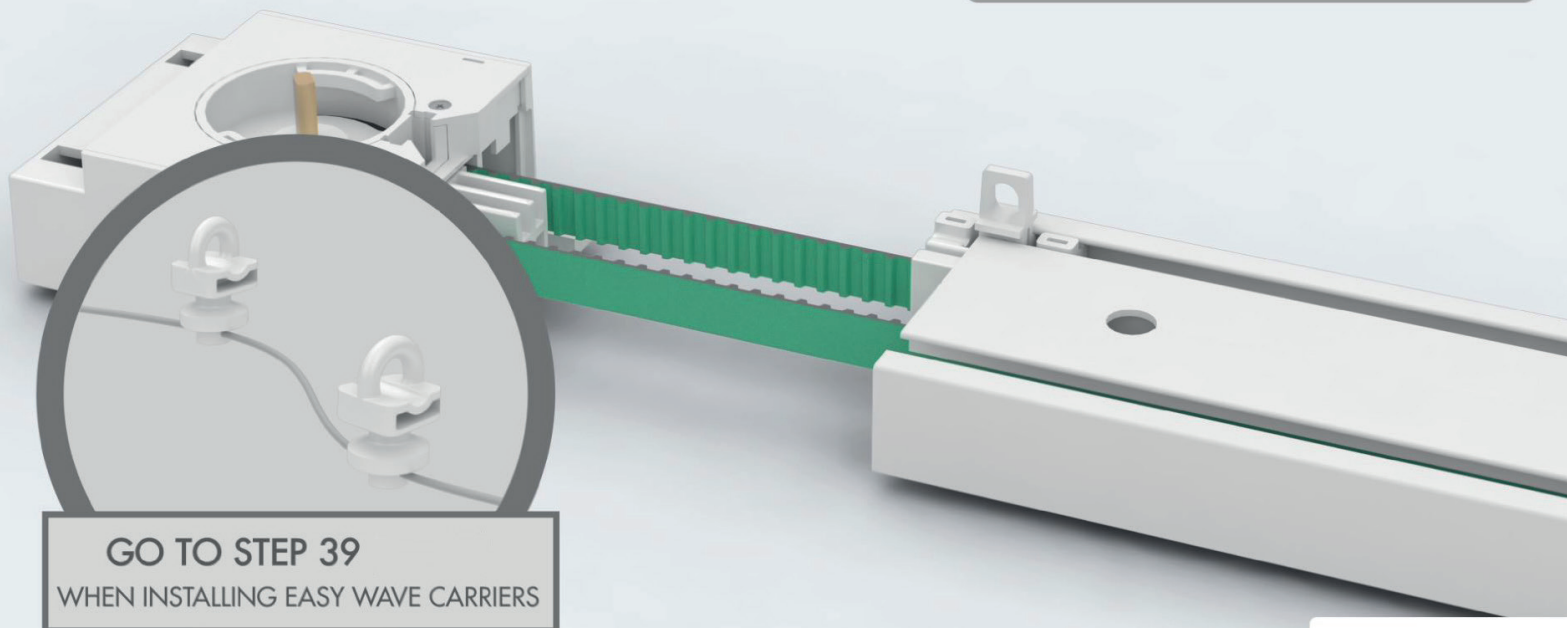
A FEW ROTATIONS ARE ENOUGH



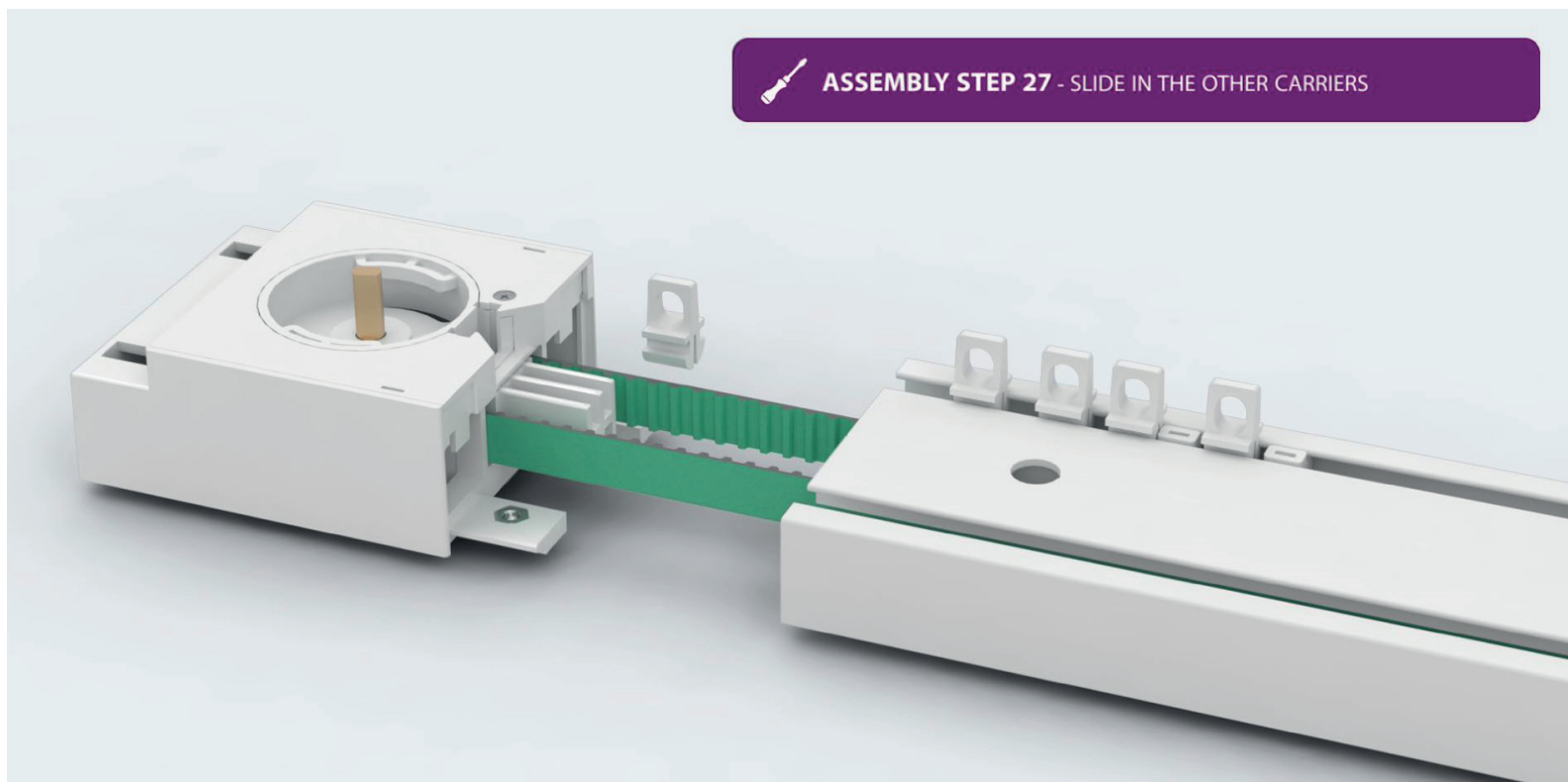


 **ASSEMBLY STEP 26** - PLACE A CARRIER INTO THE FOLLOWER PART

AND SLIDE THEM BOTH INTO THE TRACK

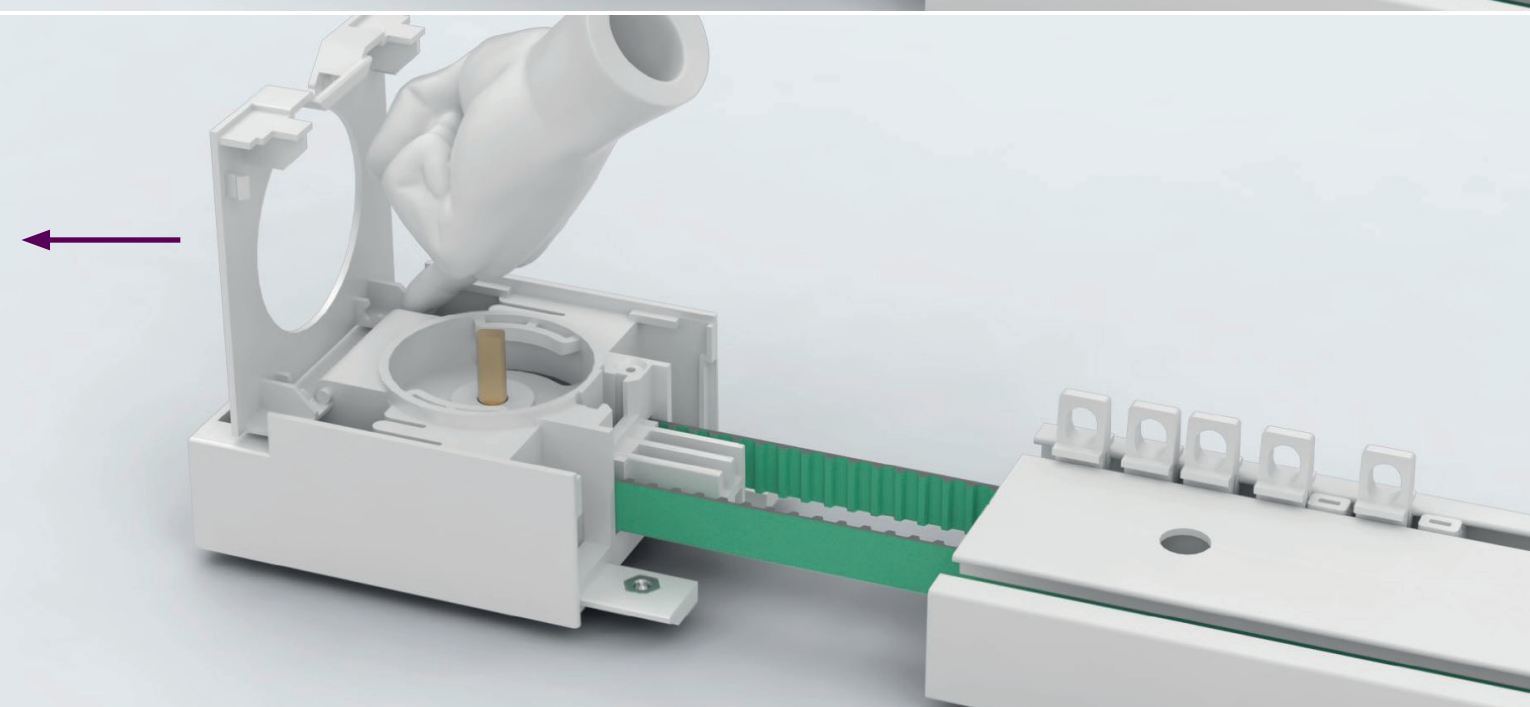
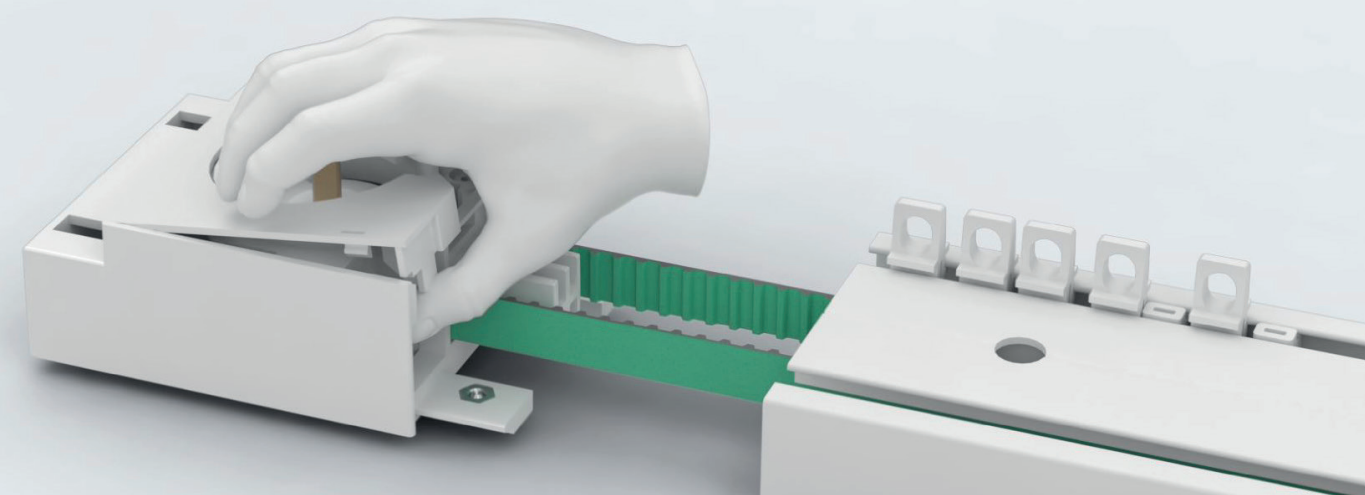
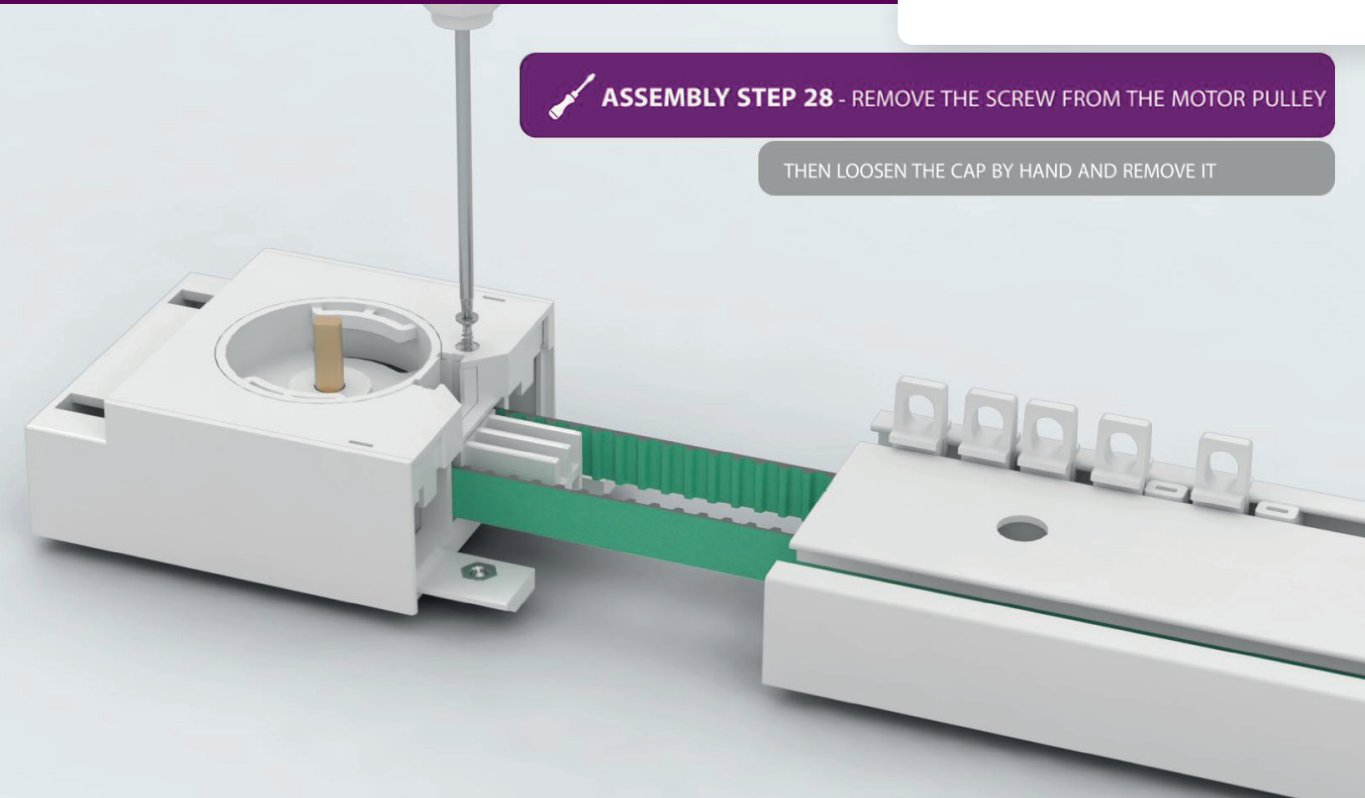


 **ASSEMBLY STEP 27** - SLIDE IN THE OTHER CARRIERS



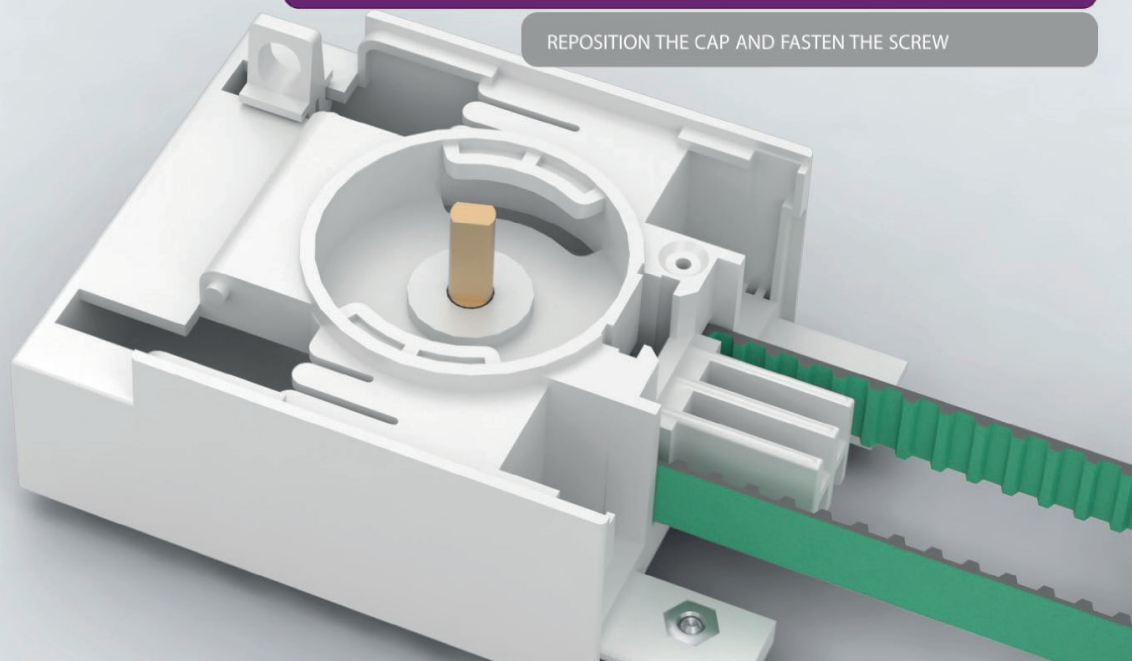
 **ASSEMBLY STEP 28** - REMOVE THE SCREW FROM THE MOTOR PULLEY

THEN LOOSEN THE CAP BY HAND AND REMOVE IT

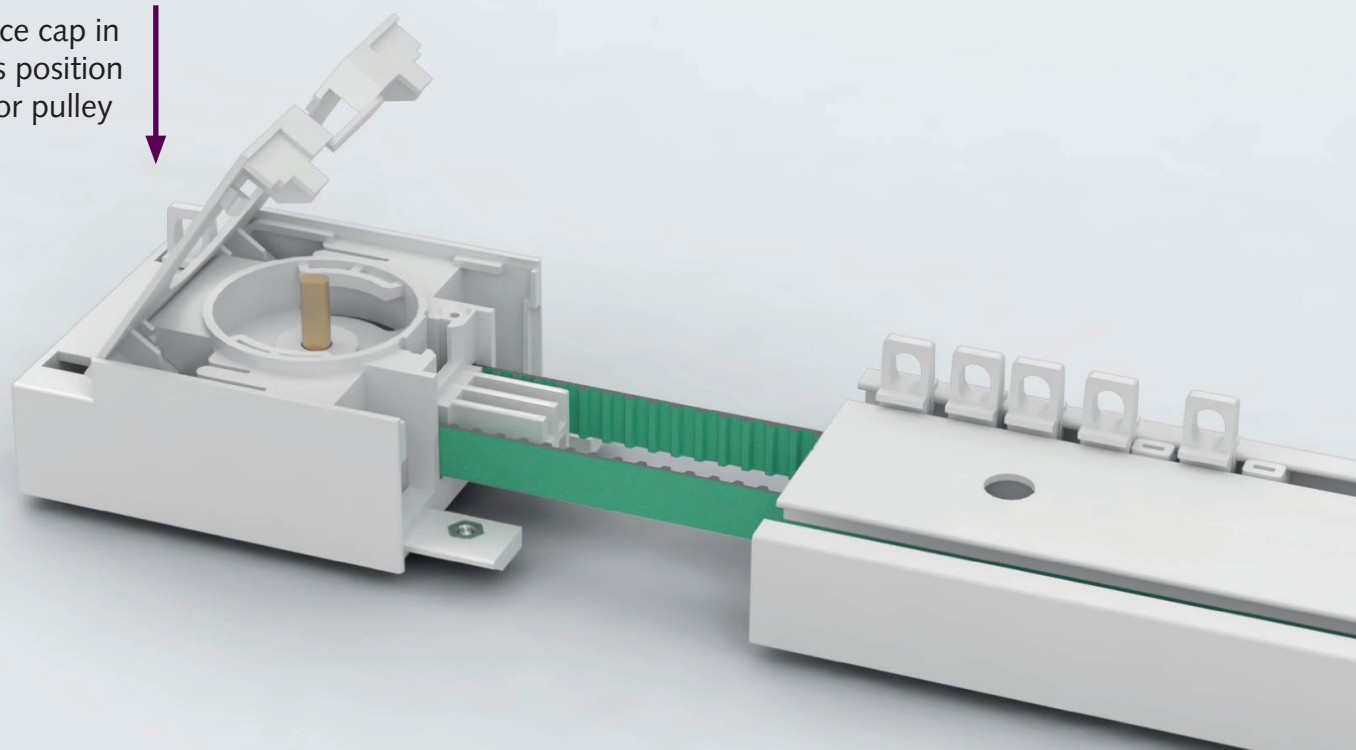


 **ASSEMBLY STEP 29** - PLACE A CARRIER INTO THE MOTOR PULLEY

REPOSITION THE CAP AND FASTEN THE SCREW

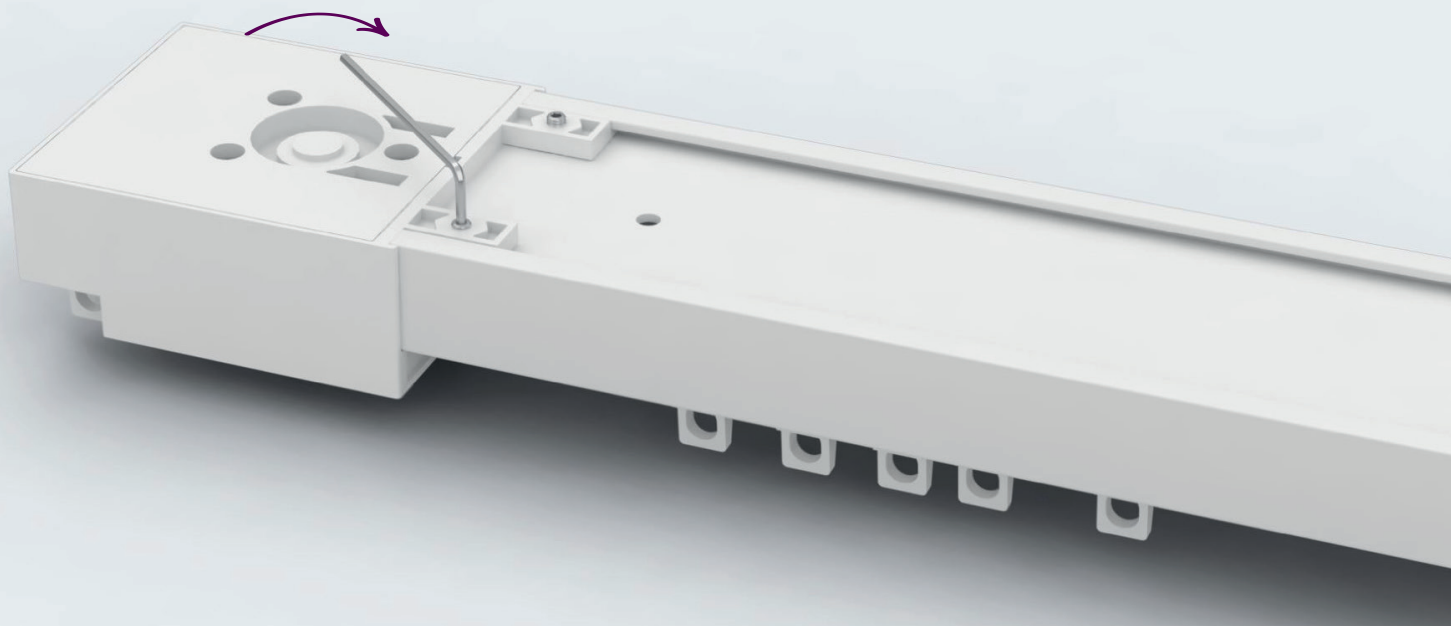
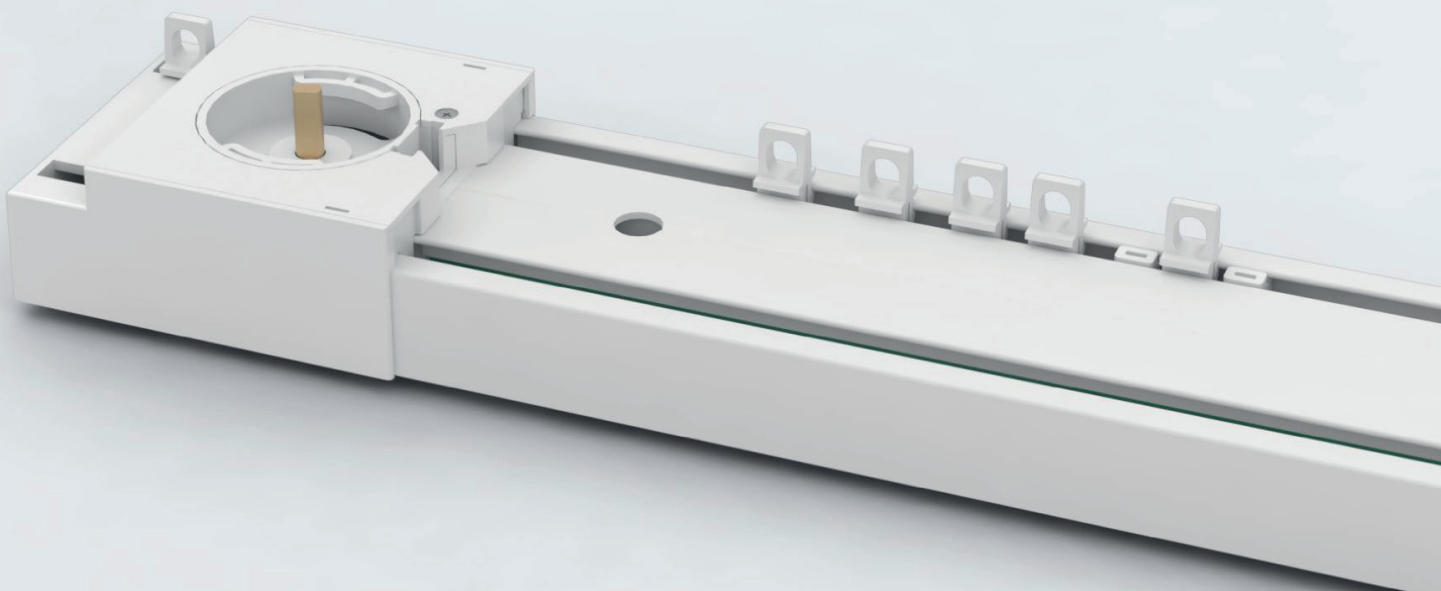


place cap in
this position
into pulley



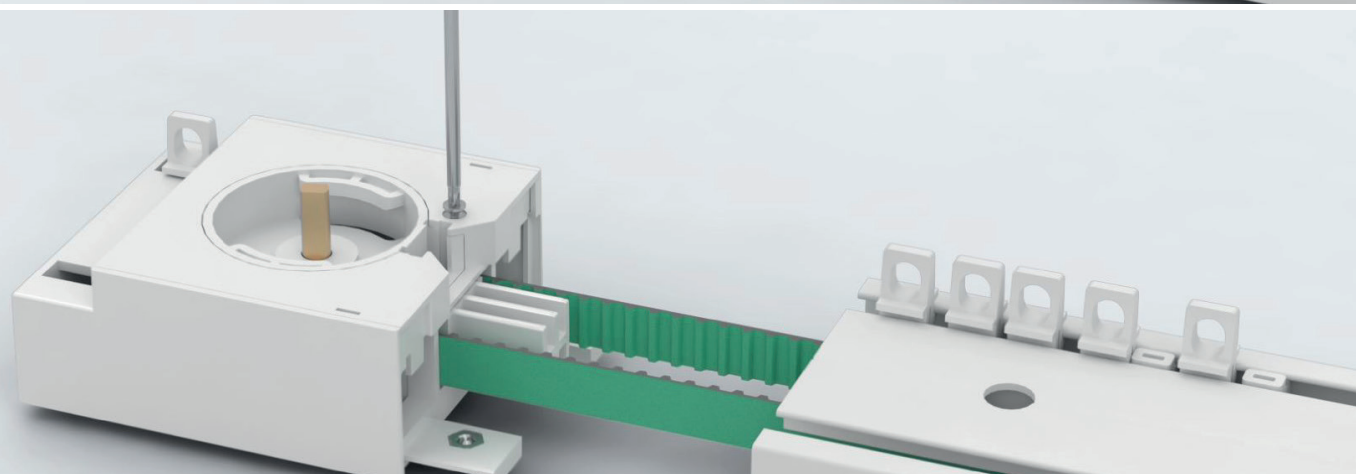
 **ASSEMBLY STEP 30** - ATTACH THE MOTOR PULLEY TO THE TRACK

AND TIGHTEN ALL THE SCREWS (A FEW ROTATIONS ARE ENOUGH)



 **ASSEMBLY STEP 31** - FASTEN THE SCREWS

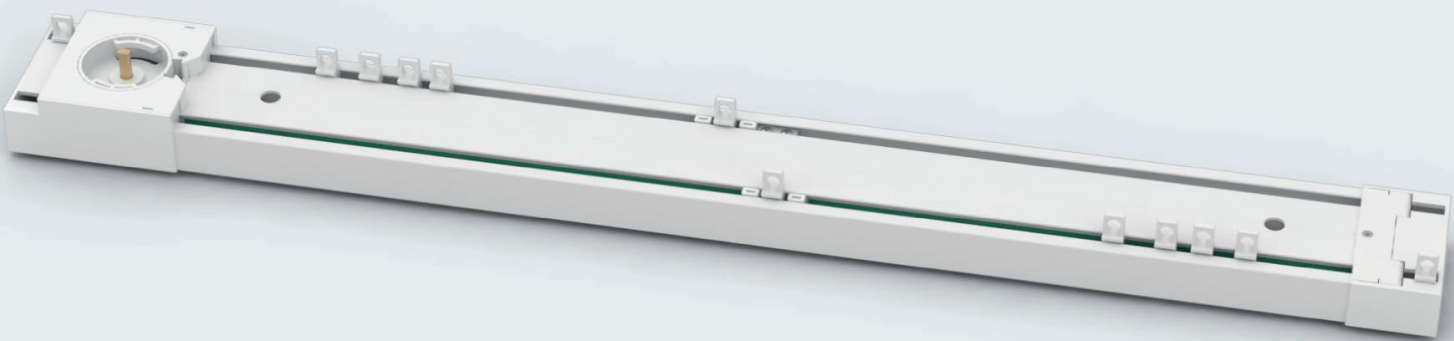
TO CONNECT THE FOLLOWER PARTS





ASSEMBLY STEP 32 - DETERMINE OVERLAP CURTAINS

CAN BE ADJUSTED TO CURTAIN LENGTH ON SITE



NOTE:

FOR EXAMPLE, WITH A TRACK OF 4 METRES AND AN OVERLAP OF 30 CM YOU GET TWO CURTAINS OF 2,15 METERS.



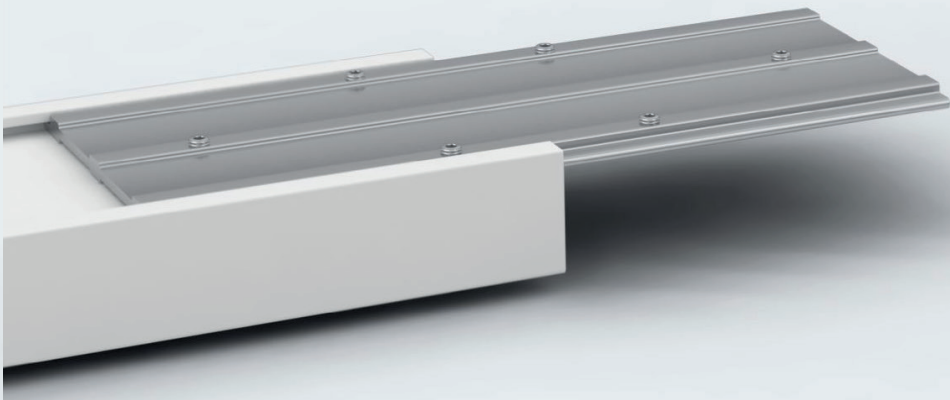
ASSEMBLY STEP 33 - PLACE THE END STOP

WHEN THE OVERLAP IS DETERMINED



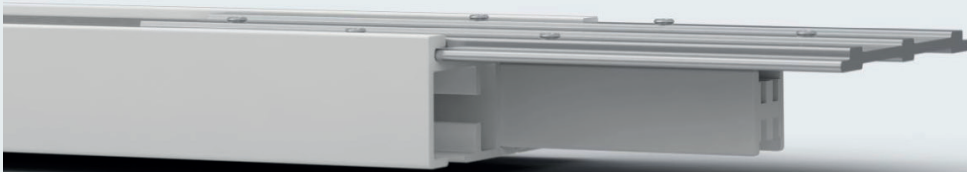
ASSEMBLY STEP 34 - PLACE THE 1ST PART

OF THE RAIL CONNECTOR INTO THE TRACK



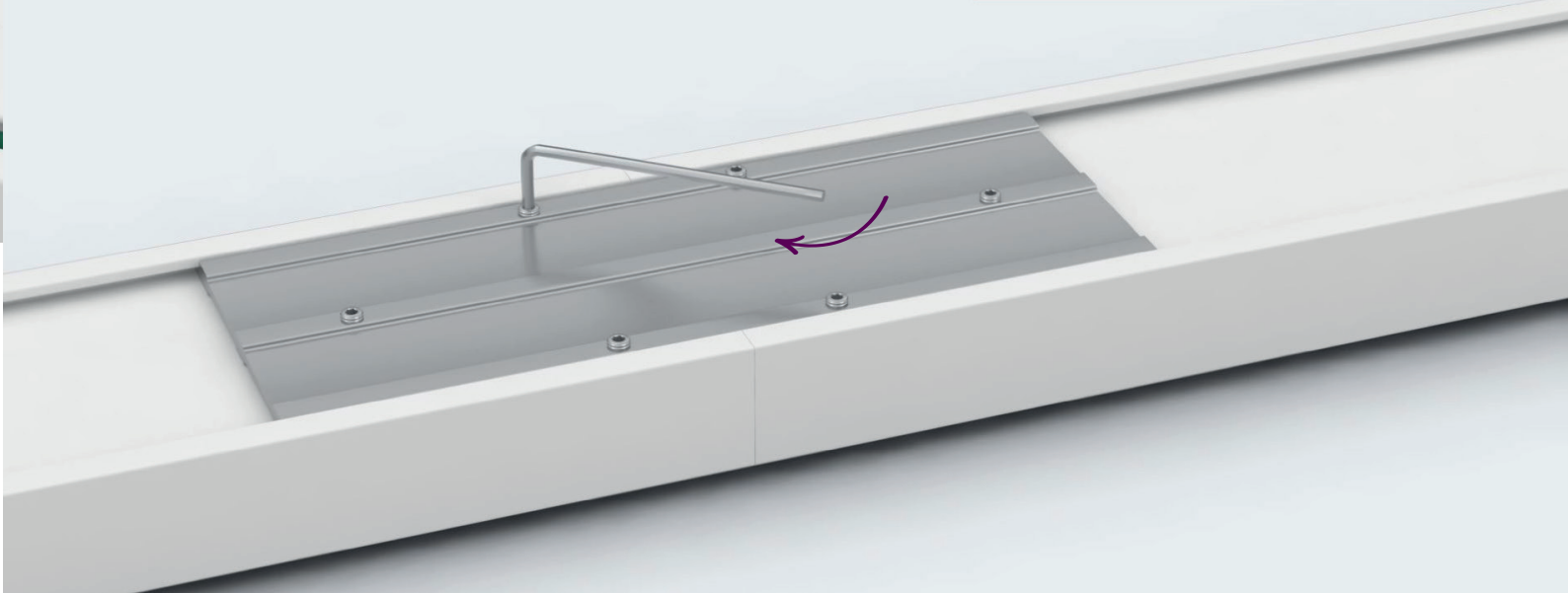
ASSEMBLY STEP 35 - PLACE THE 2ND PART OF THE RAIL CONNECTOR

A SMALL LIP PREVENTS THE RAIL CONNECTOR TO SLIDE IN TOO FAR



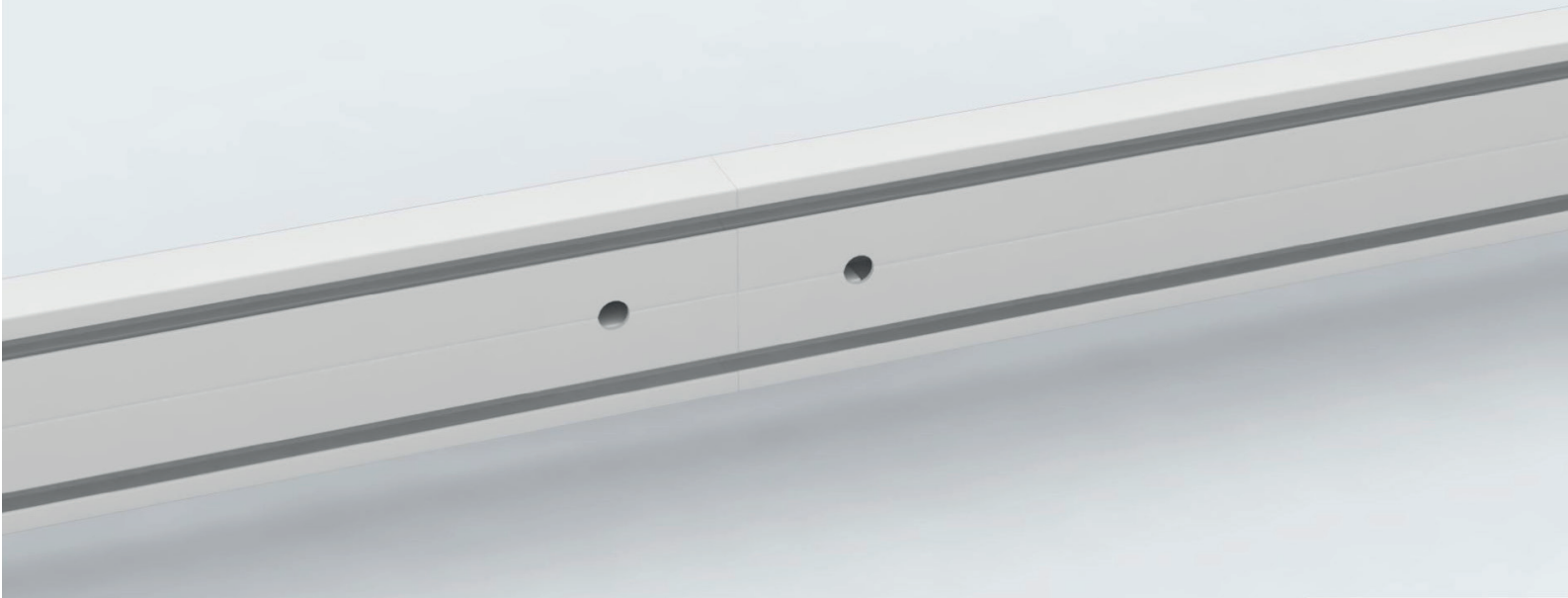
ASSEMBLY STEP 36 - SLIDE IN THE 2ND TRACK

AND TIGHTEN THE SCREWS



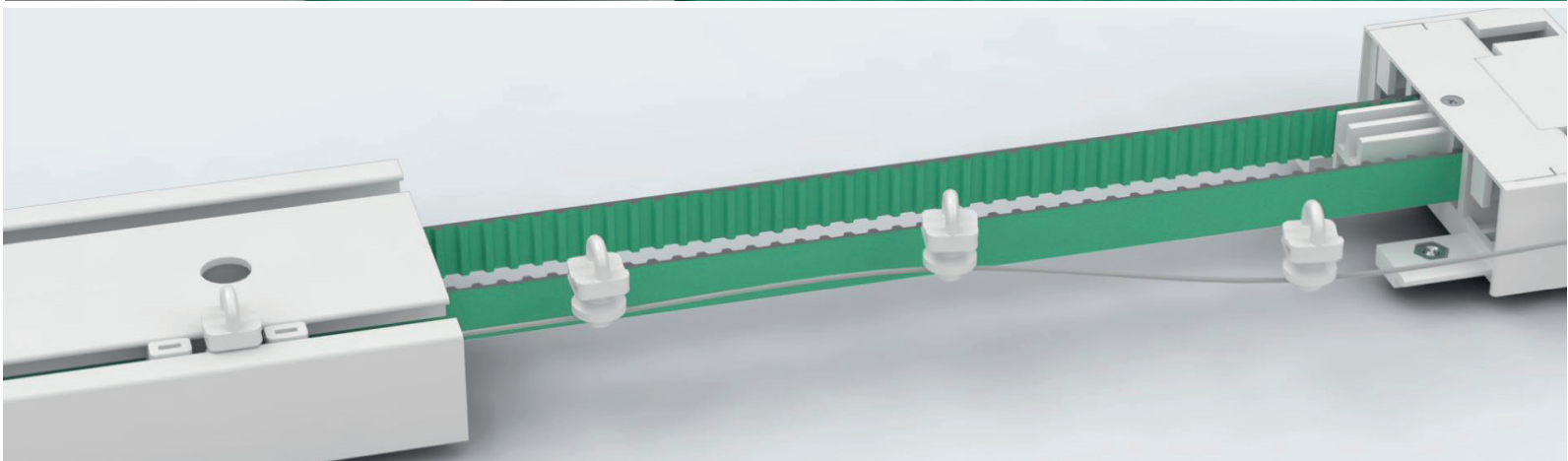
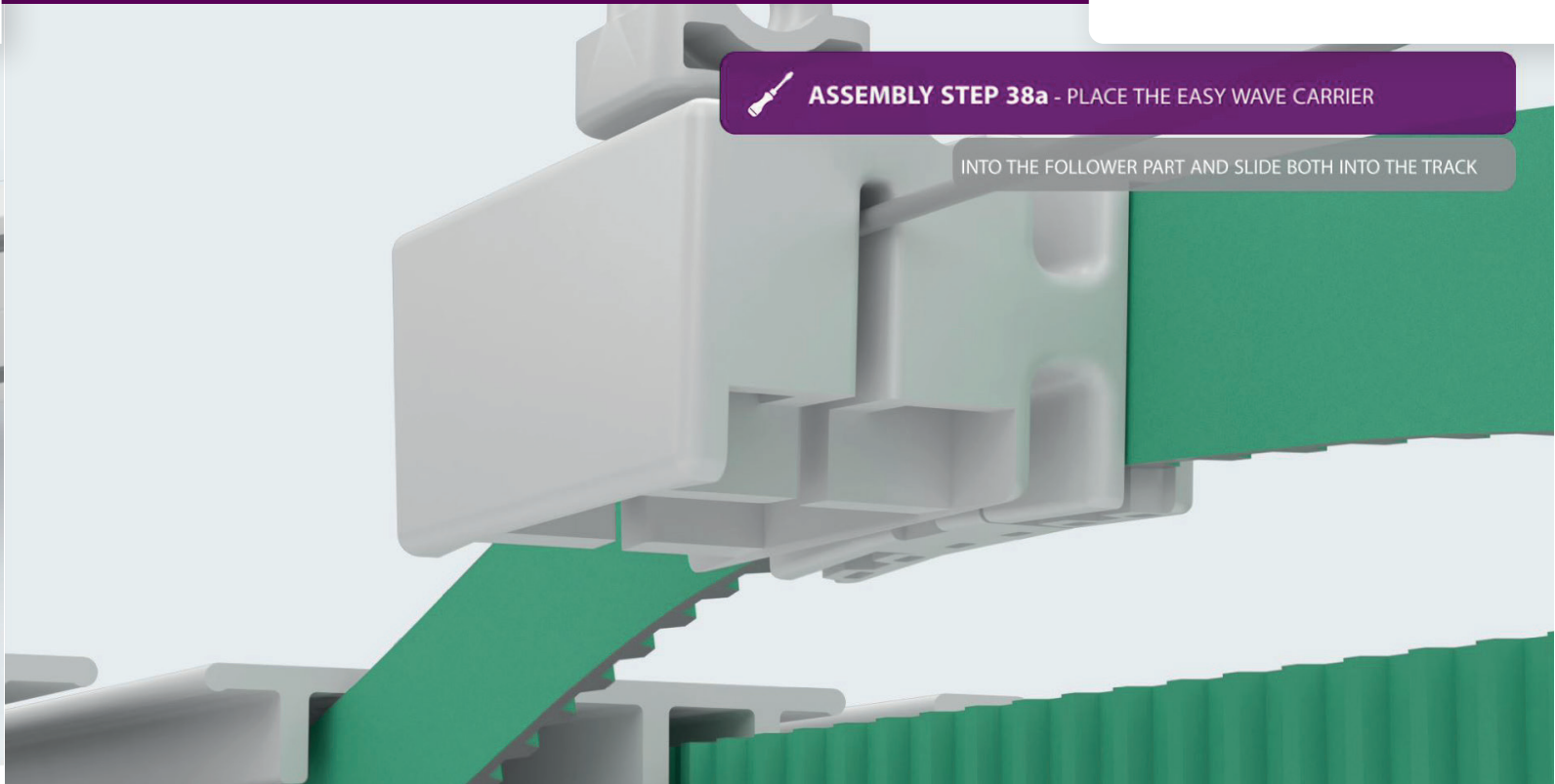
 **ASSEMBLY STEP 37** TIP: TURN THE TRACK ON IT'S SIDE AND LIFT IT UP


WHERE THE CONNECTOR IS MOUNTED, TO PREVENT BENDING OF THE TRACK



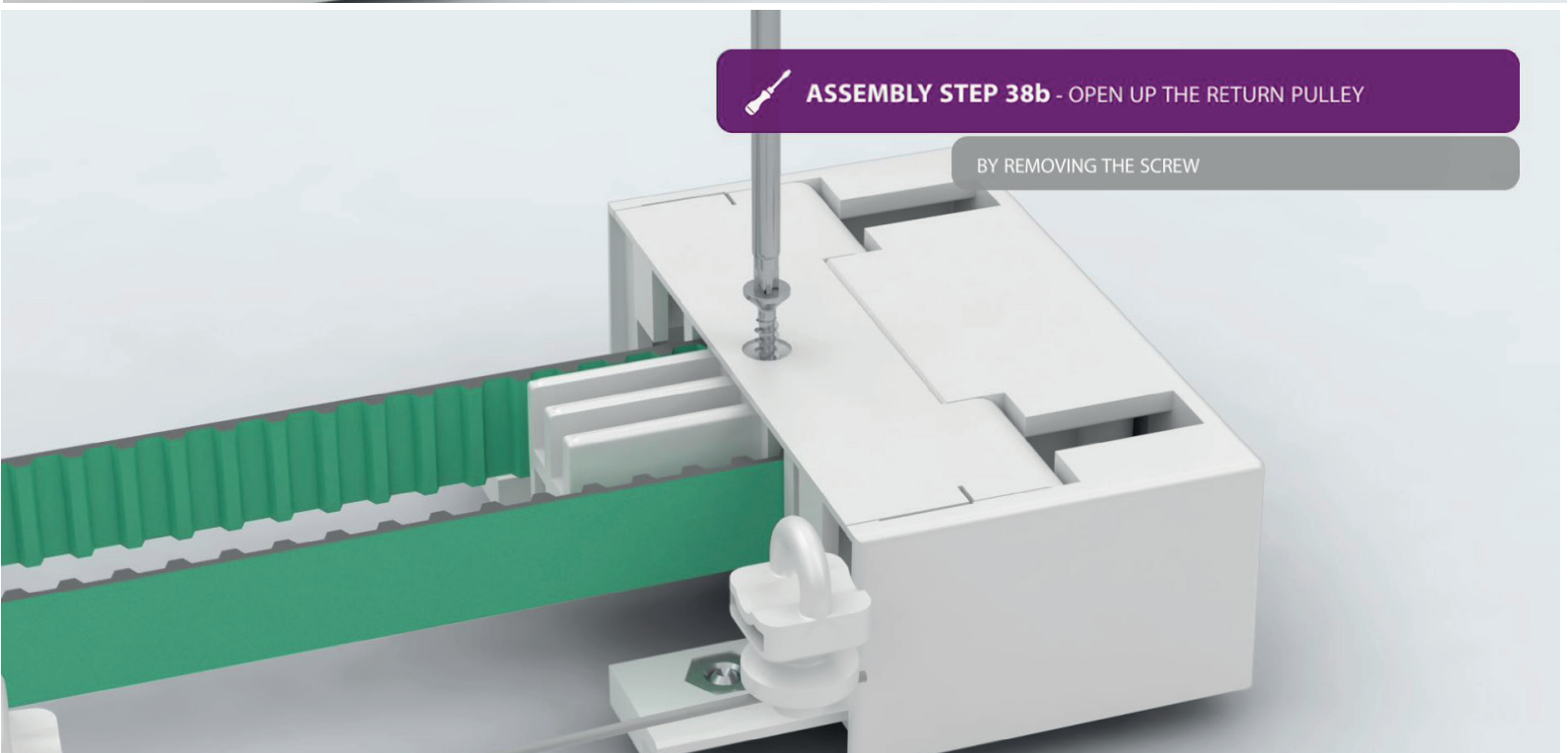
 **ASSEMBLY STEP 38a** - PLACE THE EASY WAVE CARRIER

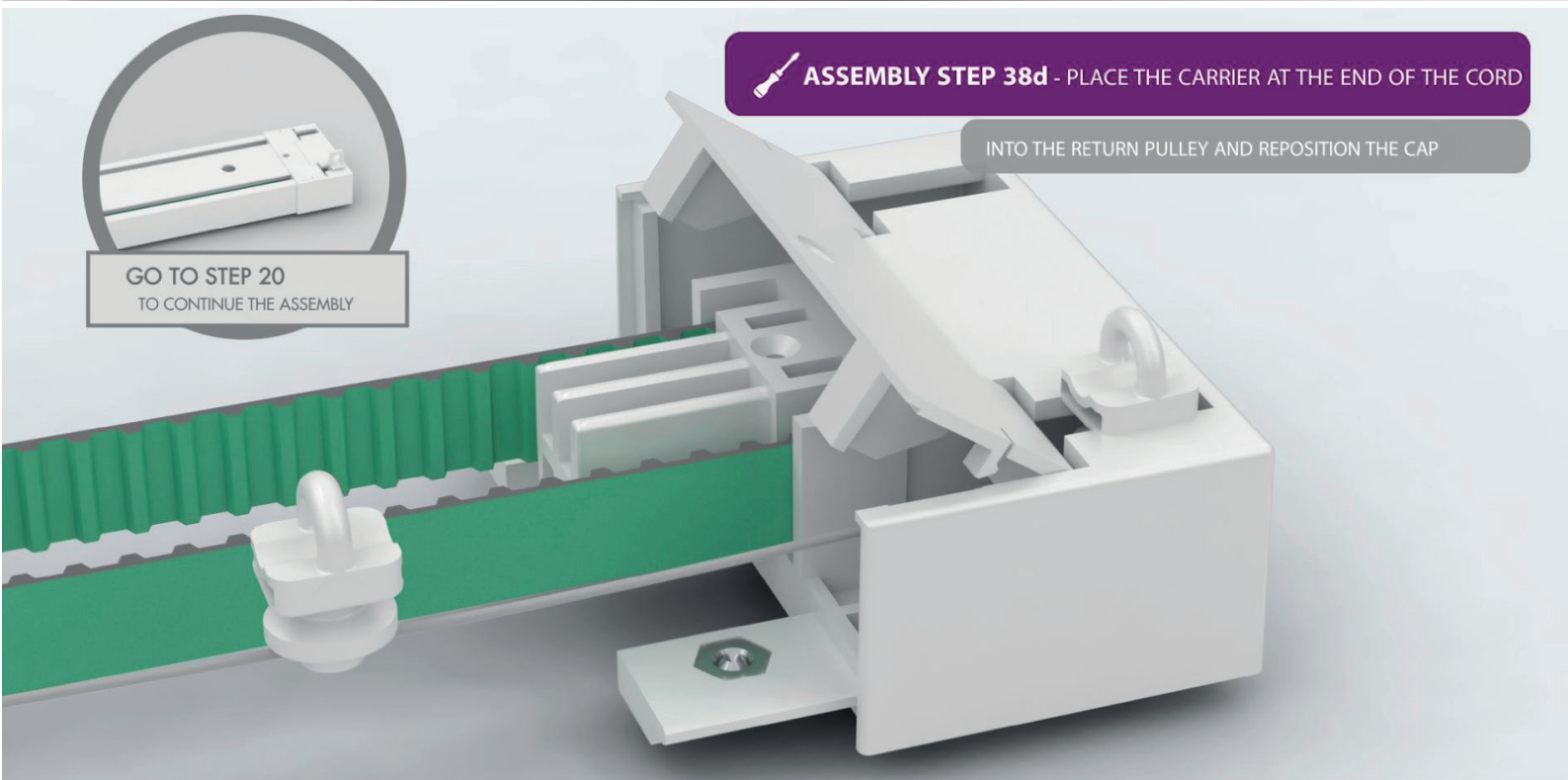
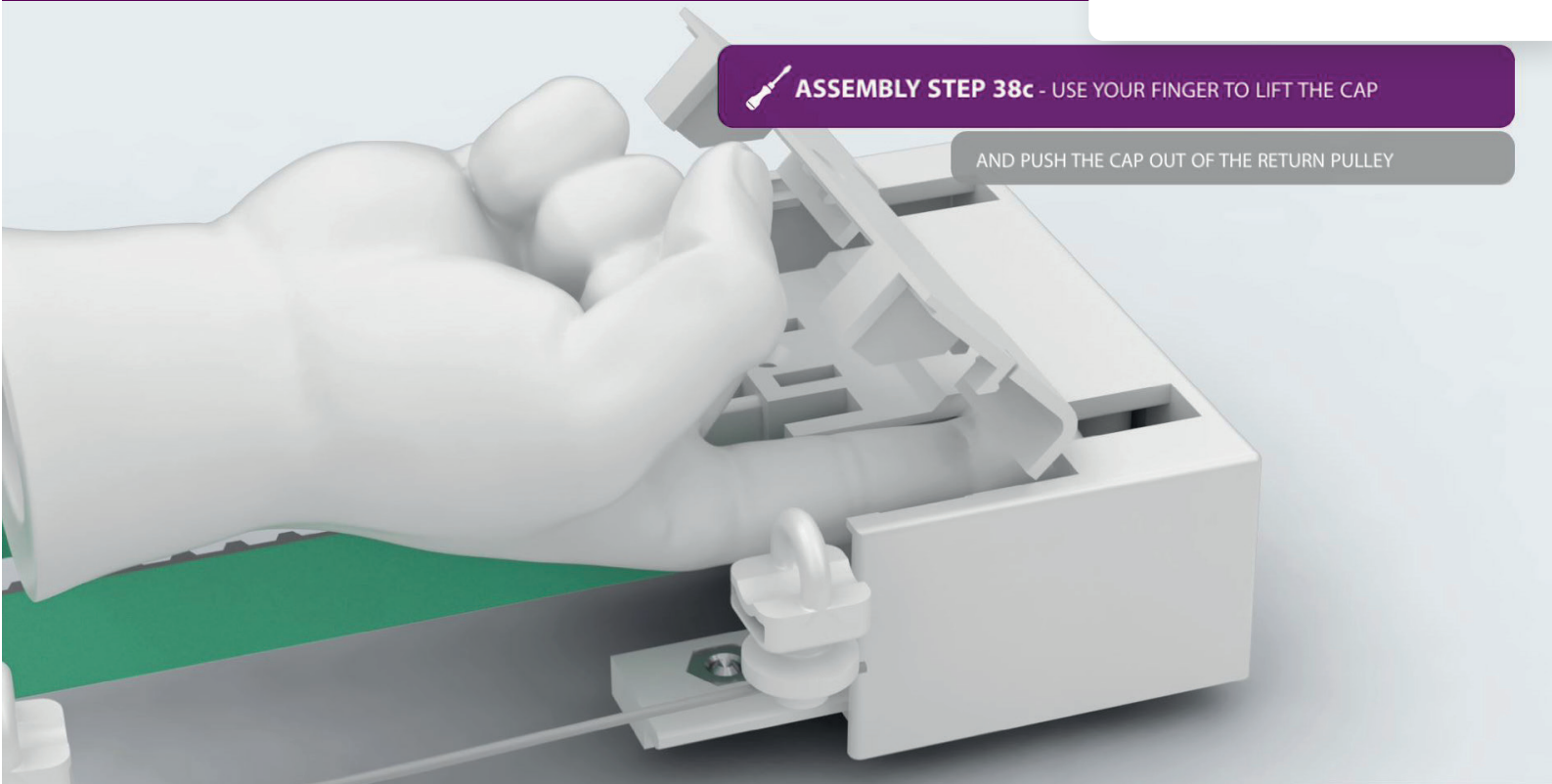
INTO THE FOLLOWER PART AND SLIDE BOTH INTO THE TRACK



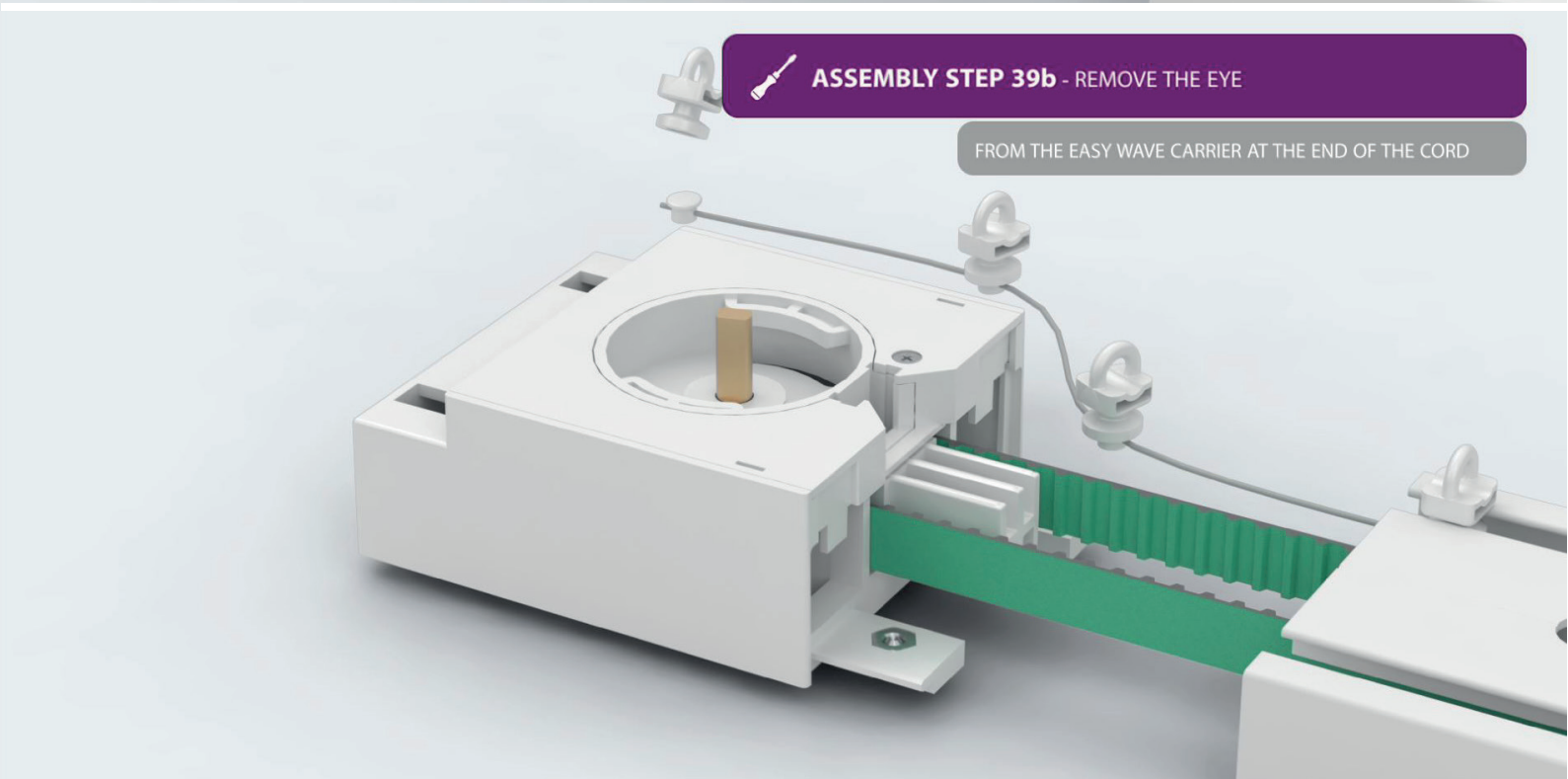
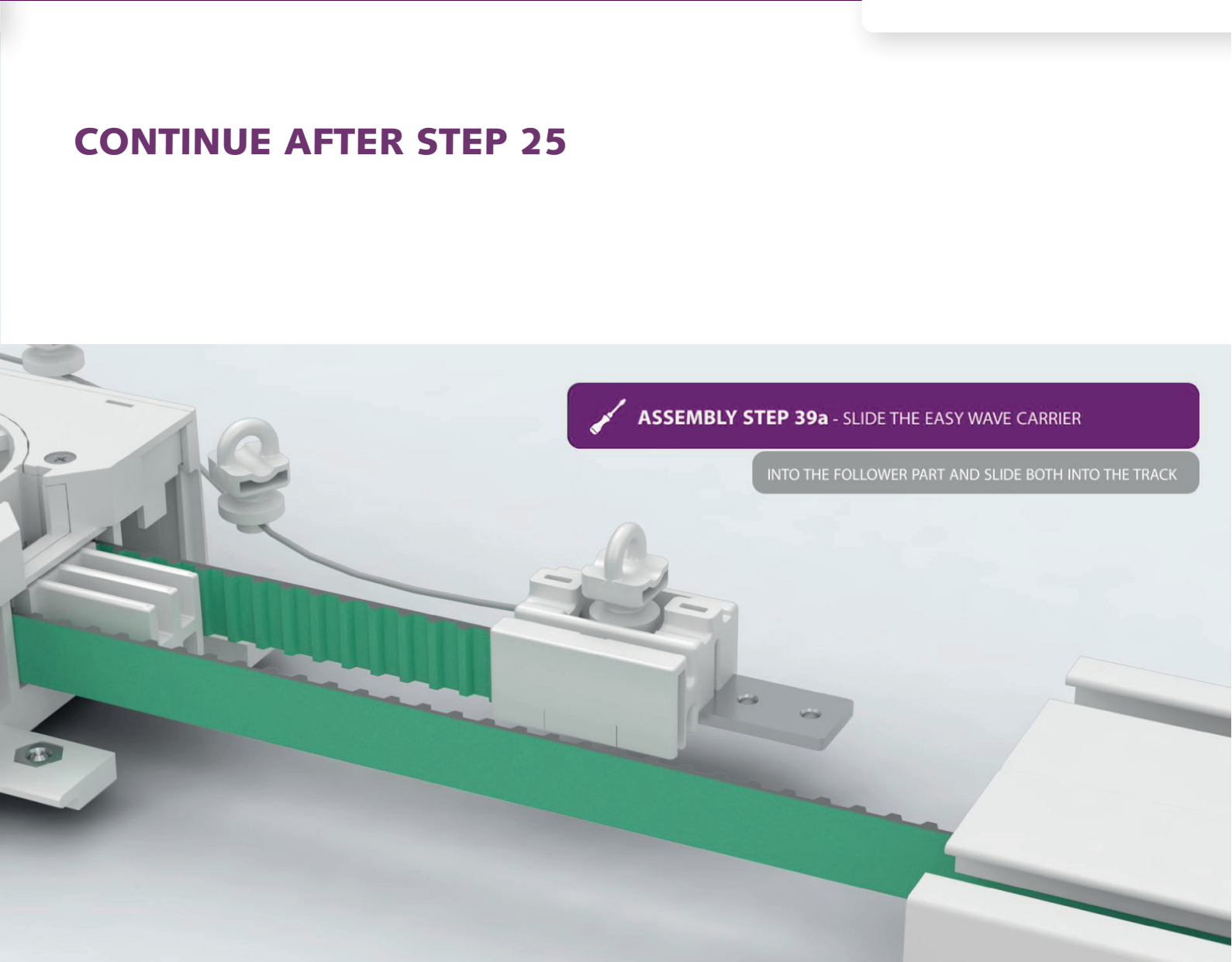
 **ASSEMBLY STEP 38b** - OPEN UP THE RETURN PULLEY

BY REMOVING THE SCREW



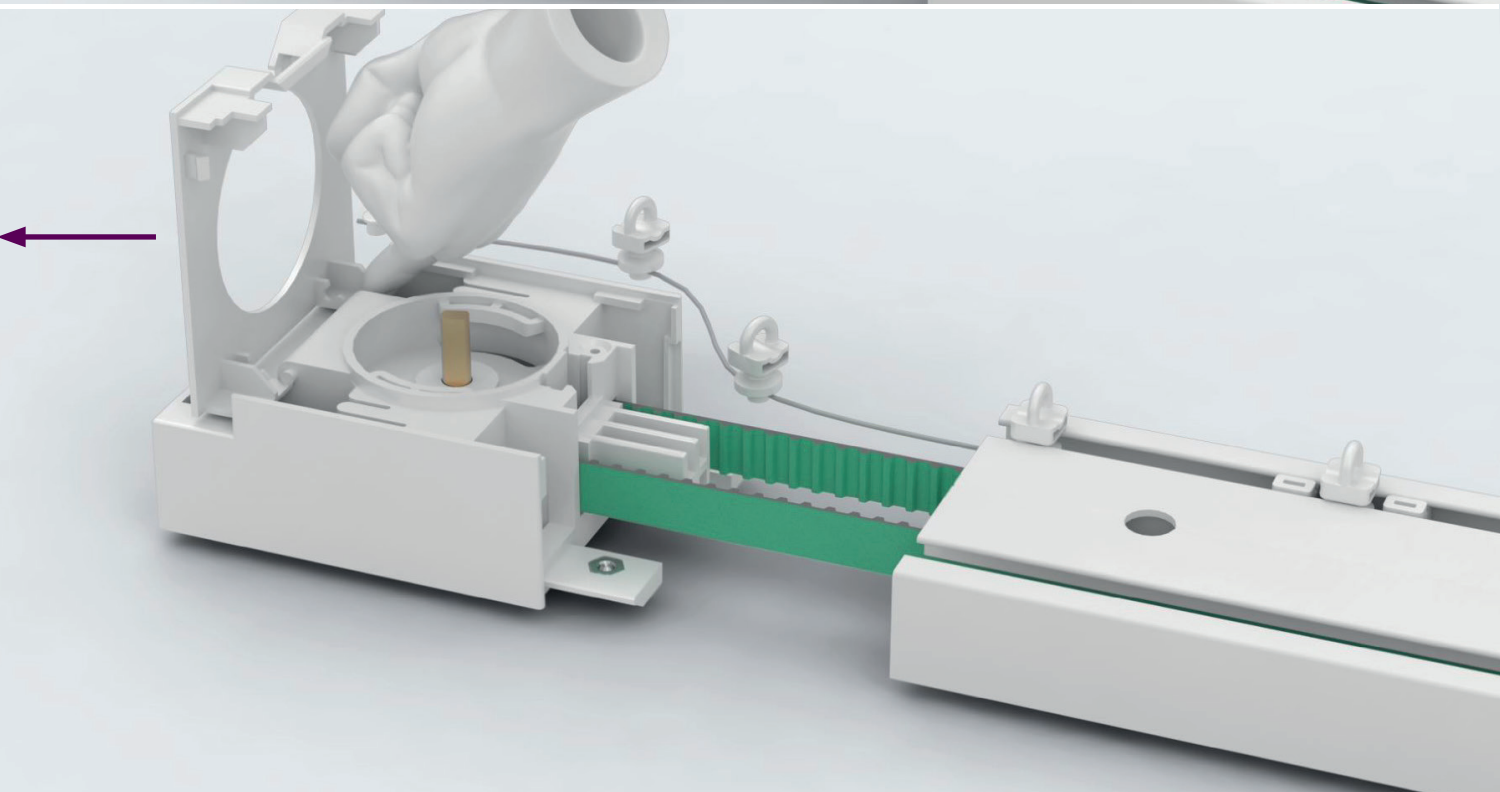
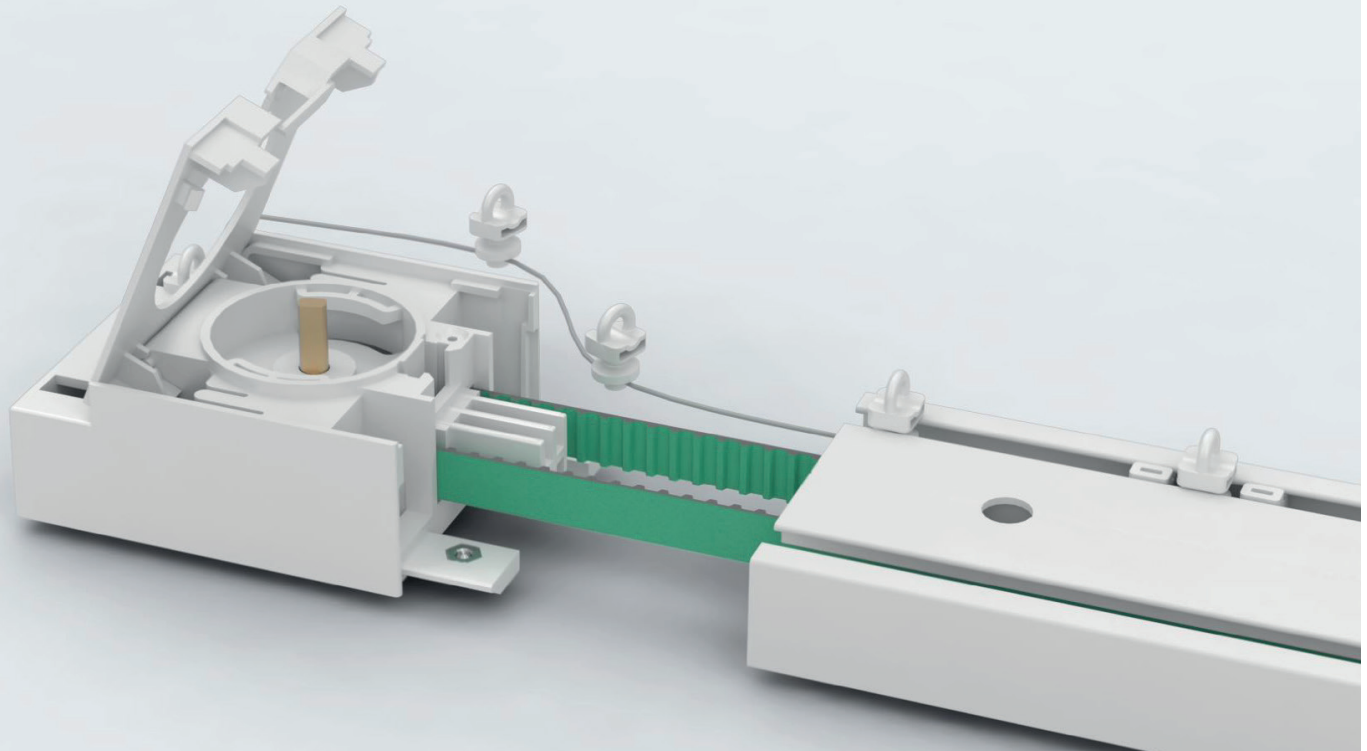
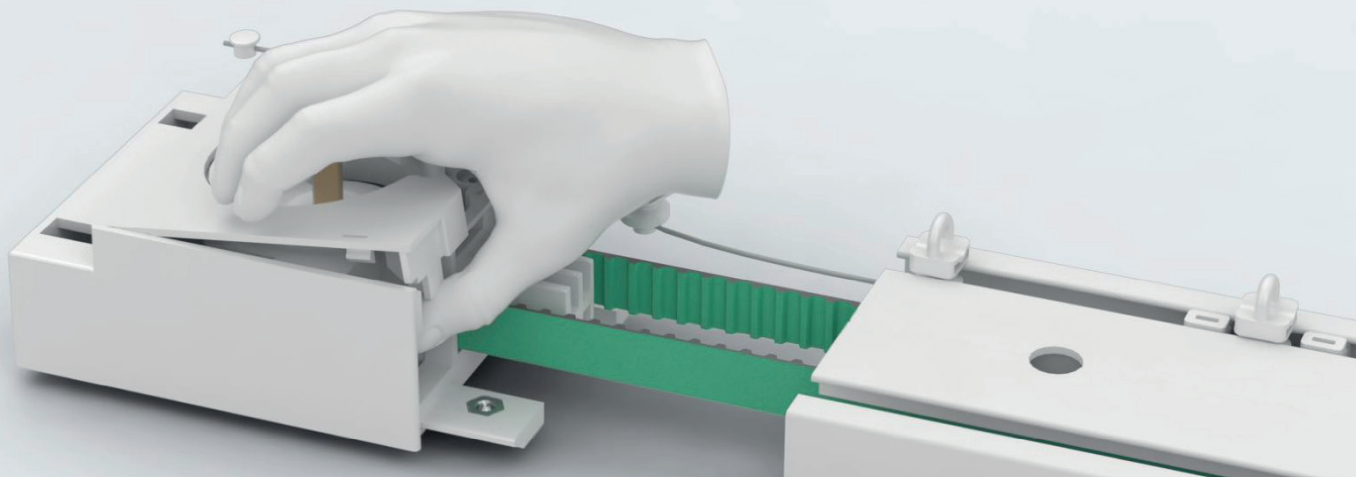
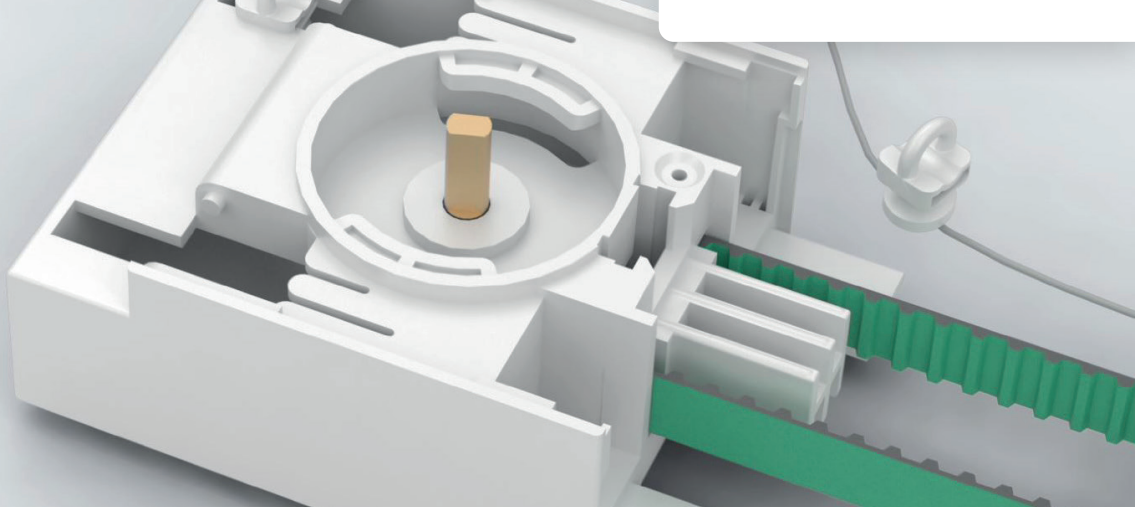
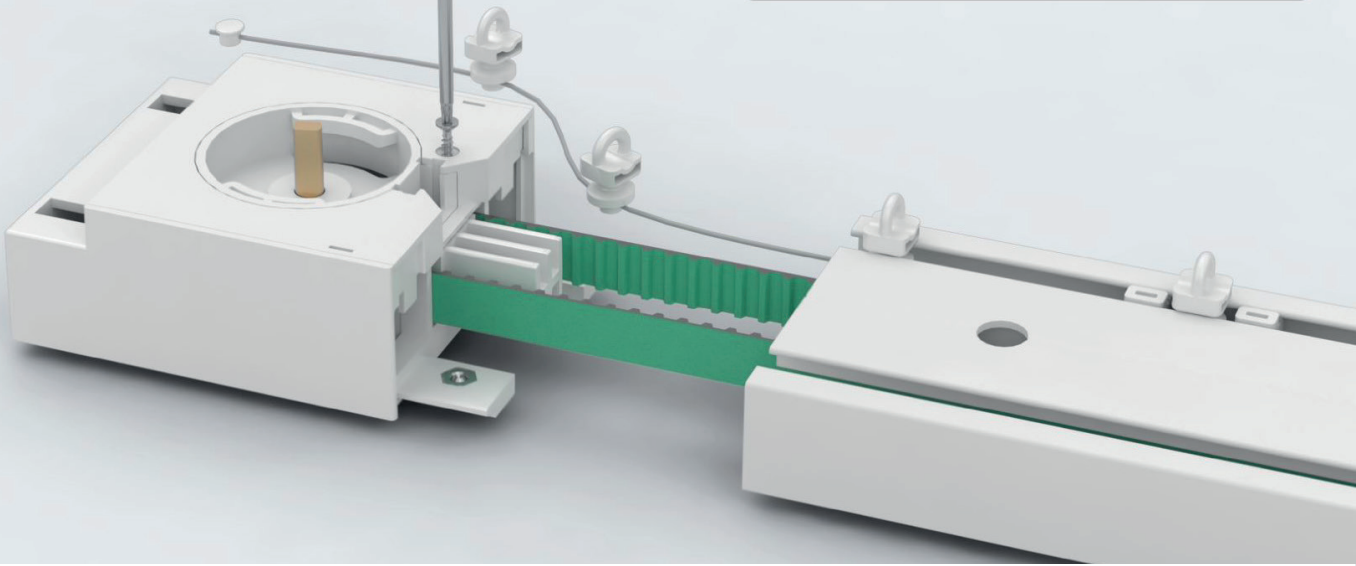


GO TO STEP 20 TO CONTINUE THE ASSEMBLY PROCESS



 **ASSEMBLY STEP 39c** - REMOVE THE SCREW FROM THE MOTOR PULLEY

THEN LOOSEN THE CAP BY HAND AND REMOVE IT



 **ASSEMBLY STEP 39e** - PLACE THE CORD INTO THE CORRECT SLOT

(THERE ARE THREE POSITIONS)



EASY WAVE 100%
5,4 CM CARRIER DISTANCE



EASY WAVE 80%
6 CM CARRIER DISTANCE

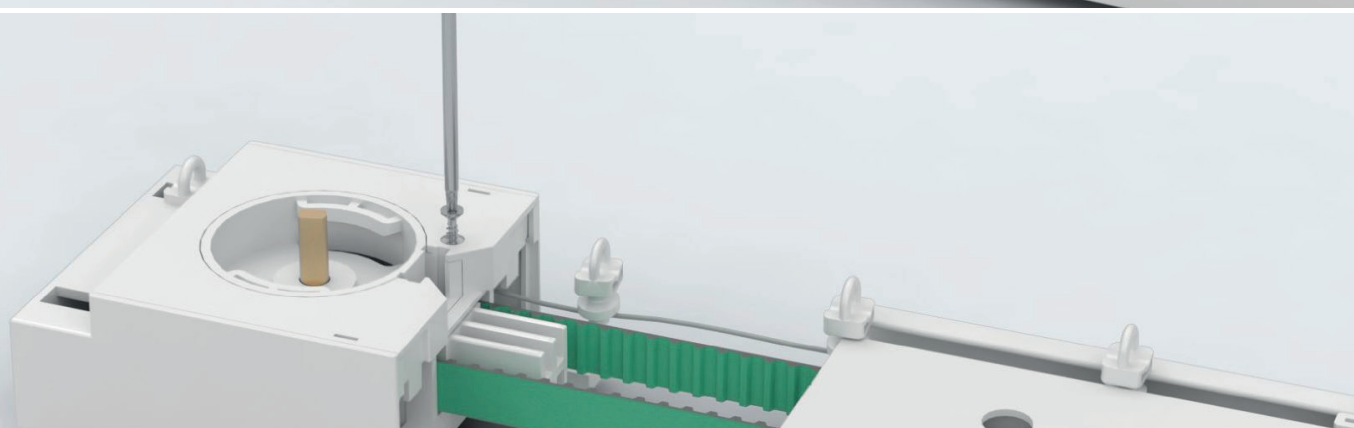
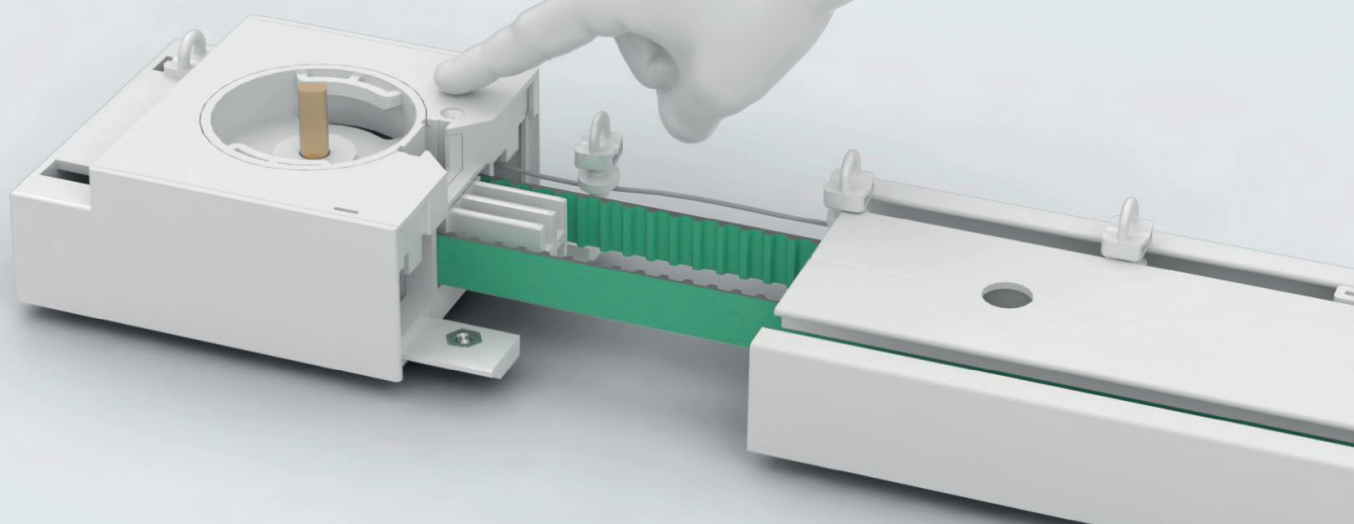


EASY WAVE 60%
8 CM CARRIER DISTANCE



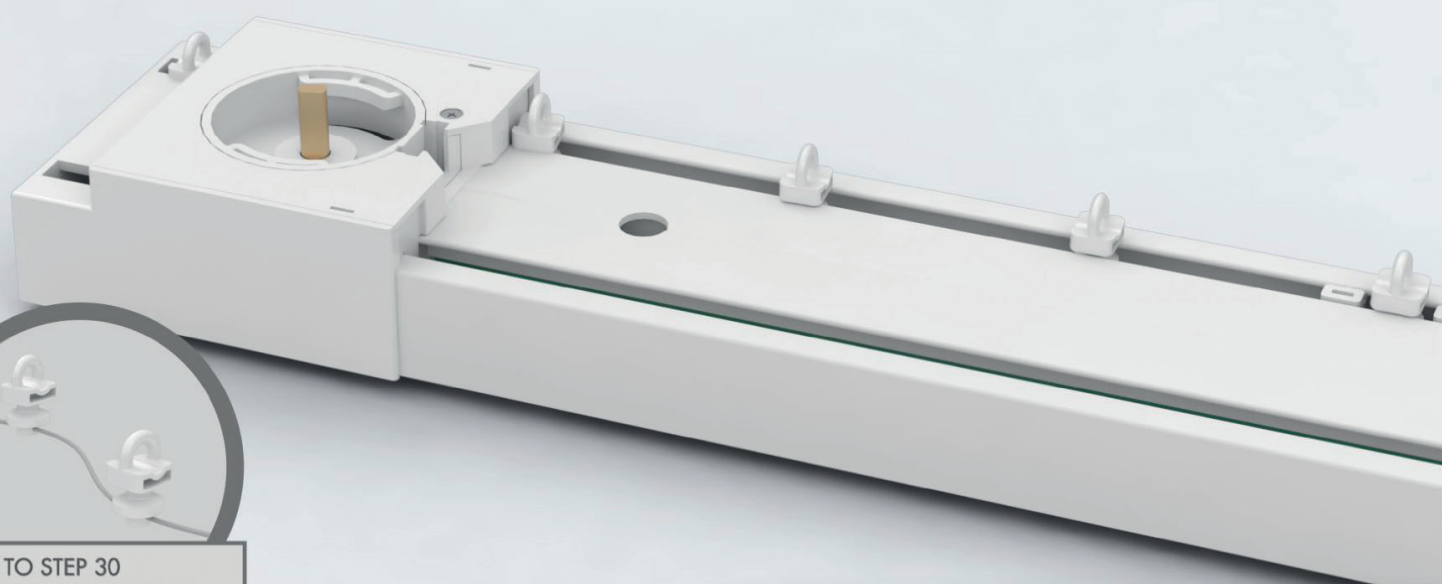
ASSEMBLY STEP 39f - CLOSE THE MOTOR PULLEY CAP

TIGHTEN THE SCREW AND SLIDE THE MOTOR PULLEY ONTO THE TRACK



ASSEMBLY STEP 39g - MAKE SURE TO PLACE THE CARRIER

CLOSE TO THE MOTOR PULLEY WHEN CHOOSING THE EASY WAVE 60% SLOT



GO TO STEP 30
TO CONTINUE THE ASSEMBLY

